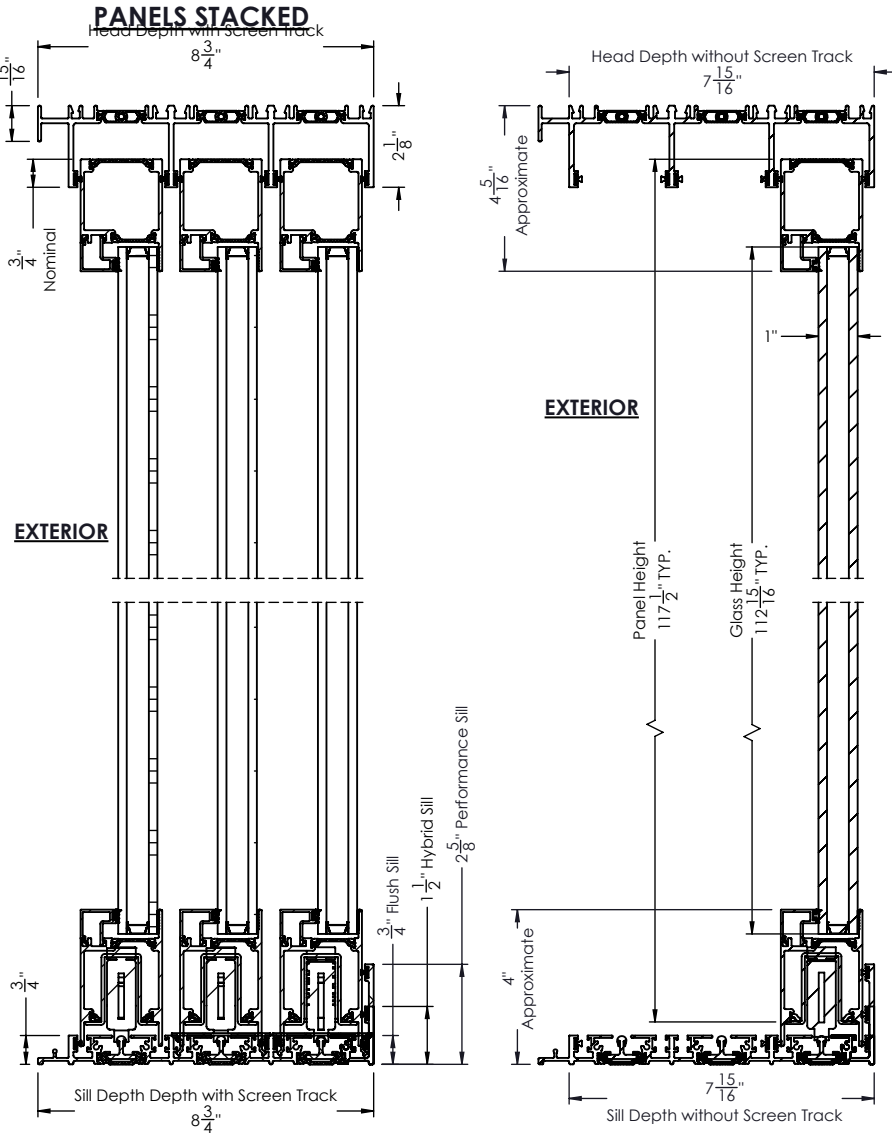


RAM S3000, OXX SLIDING DOOR

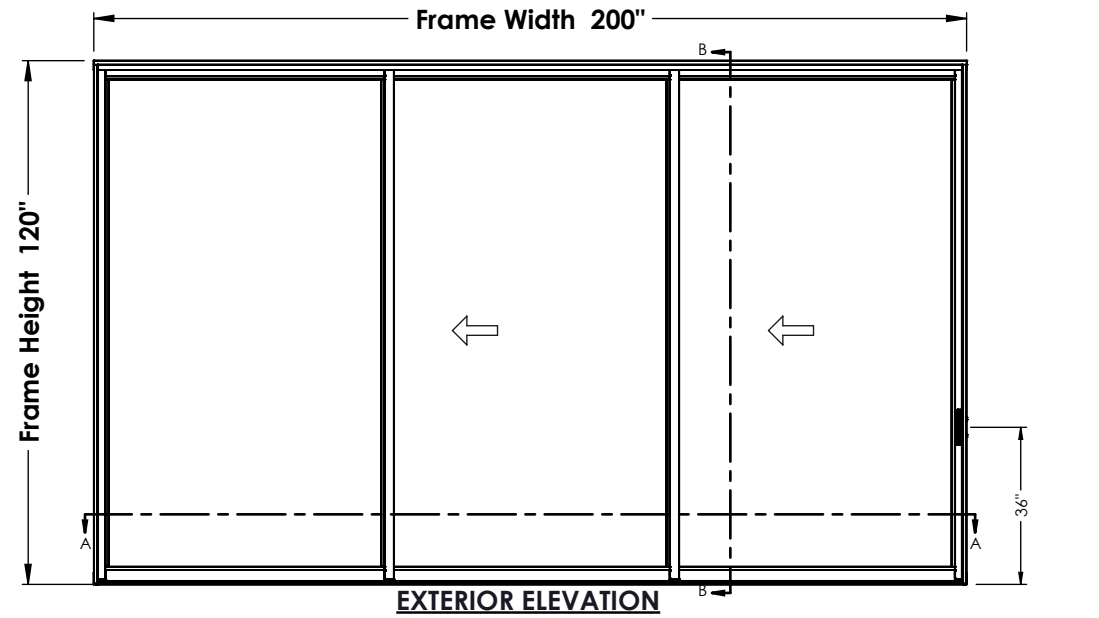
REVISIONS				
ZONE	REV	DESCRIPTION	DATE	APPROVED
	0	Initial Release	11/1/2023	



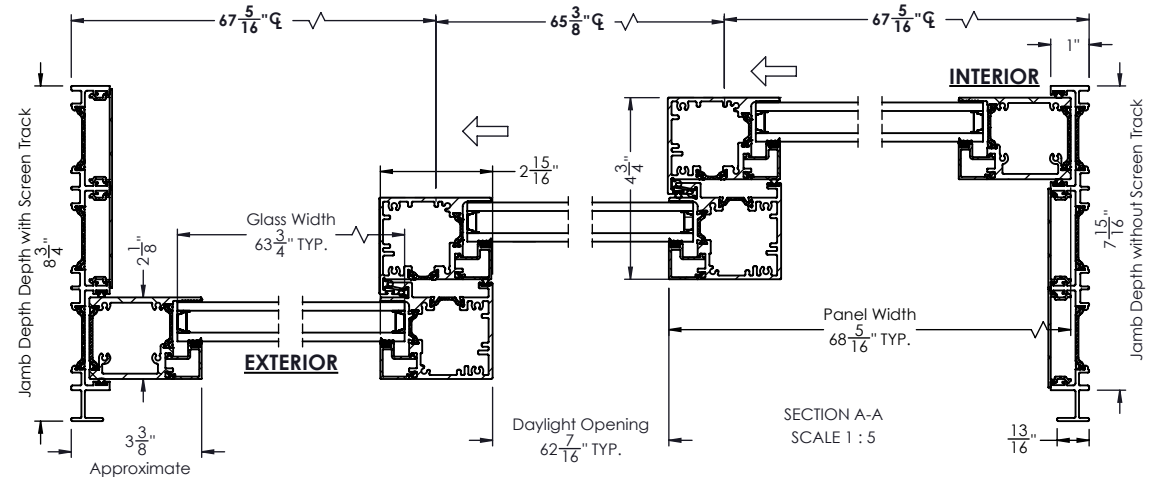
EXTERIOR

EXTERIOR

SECTION B-B
SCALE 1 : 5



EXTERIOR ELEVATION



SECTION A-A
SCALE 1 : 5

PROPRIETARY AND CONFIDENTIAL

THE INFORMATION CONTAINED IN THIS DRAWING IS THE SOLE PROPERTY OF RAM WINDOWS & DOORS. ANY REPRODUCTION IN PART OR AS A WHOLE WITHOUT THE WRITTEN PERMISSION OF RAM WINDOWS & DOORS IS PROHIBITED.



LEAD TIME		CUSTOMER	RAM S3000	UNLESS OTHERWISE SPECIFIED: DIMENSIONS ARE IN INCHES TOLERANCES:	NAME	DATE	
GLASS WARRANTY		PROJECT	XXO SLIDING DOOR		DRAWN	CG	11/1/2023
FRAME WARRANTY		CITY		FRACTIONAL: ± 1/16 ANGULAR: MACH/BEND: ± 1 TWO PLACE DECIMAL ± 0.01 THREE PLACE DECIMAL ± 0.005	ENG		
FINISH WARRANTY		STATE		MATERIAL:	MARK		
U-FACTOR		OUTER GLASS		DO NOT SCALE DRAWING	QTY.		
SHGC		AIR SPACE			FINISH		
OA GLASS THICKNESS	1"	INNER GLASS			DP		
					SCALE: 1:44		

RAM WINDOWS AND DOORS		
TITLE: RAM S3000, OXX SLIDING DOOR		
SIZE A	WTS NUMBER	REV
	OXX-Top-Assembly	
	WEIGHT: 1167.629	SHEET 1 OF 1