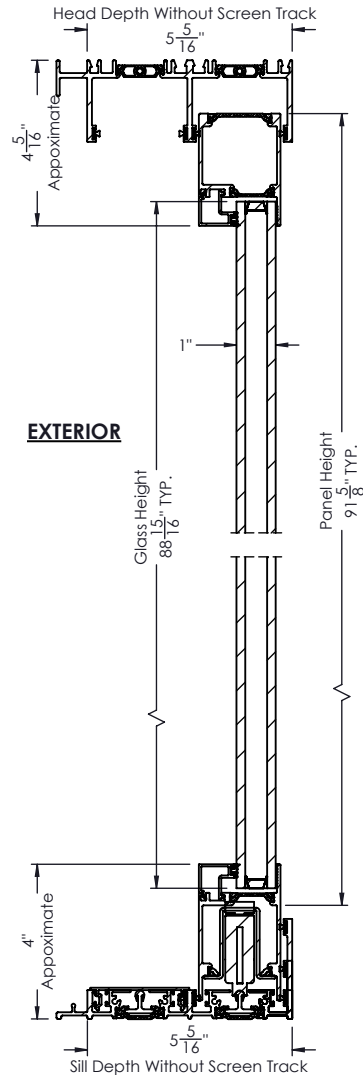
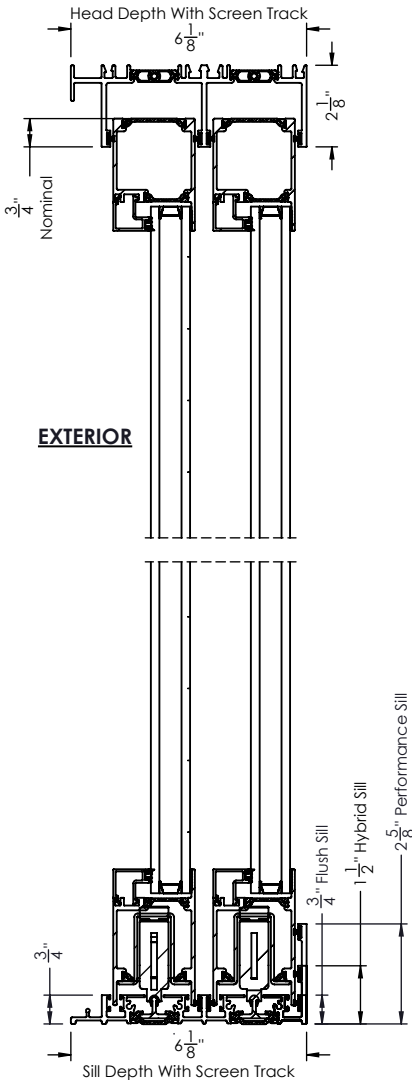


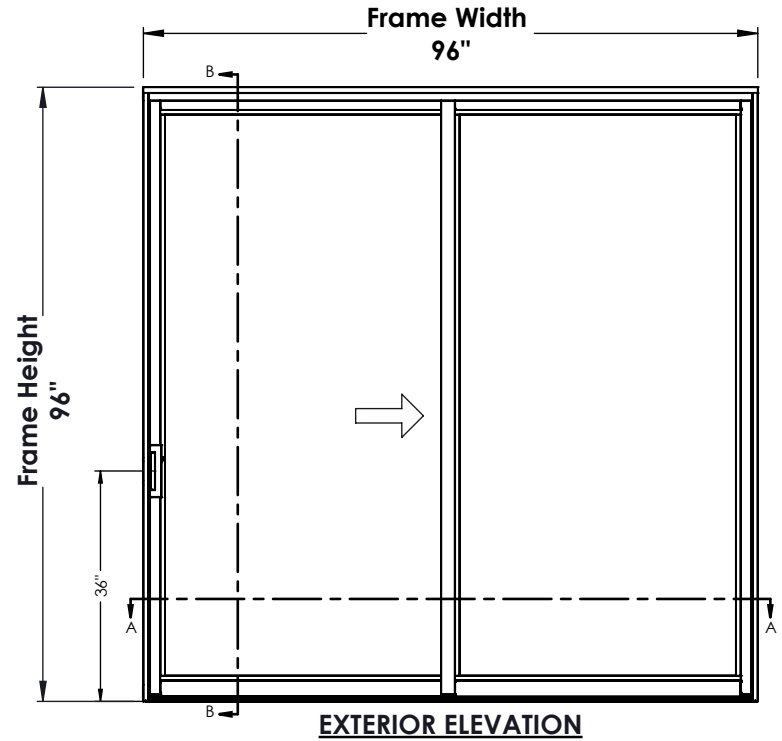
# RAM S3000, XO SLIDING DOOR

REVISIONS				
ZONE	REV	DESCRIPTION	DATE	APPROVED
	0	Initial Release	10/31/2023	

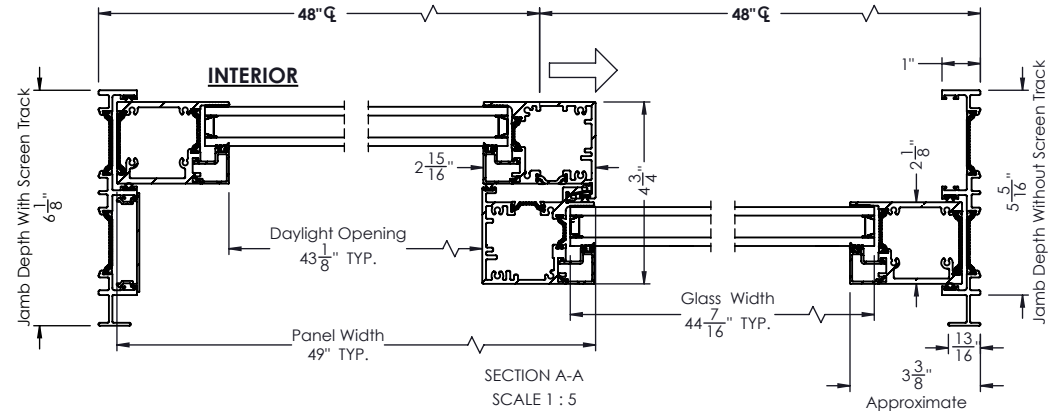
## PANELS STACKED



SECTION B-B  
SCALE 1 : 5



EXTERIOR ELEVATION



SECTION A-A  
SCALE 1 : 5

### PROPRIETARY AND CONFIDENTIAL

THE INFORMATION CONTAINED IN THIS DRAWING IS THE SOLE PROPERTY OF RAM WINDOWS & DOORS. ANY REPRODUCTION IN PART OR AS A WHOLE WITHOUT THE WRITTEN PERMISSION OF RAM WINDOWS & DOORS IS PROHIBITED.



LEAD TIME		CUSTOMER	RAM S3000	UNLESS OTHERWISE SPECIFIED: DIMENSIONS ARE IN INCHES TOLERANCES:	NAME	DATE
GLASS WARRANTY		PROJECT	XO SLIDING DOOR		DRAWN	CG
FRAME WARRANTY		CITY		FRACTIONAL: ± 1/16	ENG	
FINISH WARRANTY		STATE		ANGULAR: MACH/BEND: ± 1	MARK	
U-FACTOR		OUTER GLASS		TWO PLACE DECIMAL ± 0.01	QTY.	
SHGC		AIR SPACE		THREE PLACE DECIMAL ± 0.005	FINISH	
OA GLASS THICKNESS	1"	INNER GLASS		MATERIAL:	DP	
				DO NOT SCALE DRAWING	SCALE: 1:30	

### RAM WINDOWS AND DOORS

TITLE:	RAM S3000, XO SLIDING DOOR	
SIZE	WTS NUMBER	REV
	XO-Top-Assembly	
A	WEIGHT: 459.920	SHEET 1 OF 1