



S-3200 Bifold Installation Instructions:

The product is top-hung.

Make sure the head is adequately supported.

Provide continuous threshold support.

Seal the jambs and the threshold 1/2" from the exterior of the frame.

Set frame into opening using temporary shims.

Shim and level threshold as necessary.

The threshold must be level - continuous shims are required.

Anchor threshold of #10 x 2-1/2 pph. Anchor head with #10 x 2-1/2 pph anchors.

Fill holes with Sealant before inserting screws to ensure penetration is completely sealed.

Mounting At Jambs:

Square and plumb the jambs, if necessary with shims.

Sealant should be pumped into jamb mounting holes to ensure penetration is completely sealed.

Anchor jambs with #10 x 2-1/2 pfh anchors.

Where the jamb and threshold meet, apply a full bead of quality sealant. Secure with the appropriate anchor screws.

Rough openings should be flashed with an appropriate moisture barrier, as per industry standards and/or building codes.

Caulk the perimeter of the door frame to the moisture barrier after installation. Apply sealant recommended by the moisture barrier manufacturer.

As a starting point:

Ensure that the rough opening is plumb, level, and approximately 12" wider and 12" taller than the net frame size.

Examine flashing.

Assemble the frame and apply the sealant to all joints to ensure a reliable seal.
Check main frame for fit - to fit required opening.

Application

For residential and commercial folding doors where weatherproofing of the opening is required.

This section covers Weatherfold 4s 50, 75 & 100 hardware suitable for non mortise timber applications.

When extra corrosion resistance is required Weatherfold 4s is available with precision stainless steel bearings.

Door Specifications

Track System:	Weatherfold 4s 50	Weatherfold 4s 75/100
Max Panel Height	3000mm	3300mm
Max Panel Weight	50kg	75/100kg
Max Panel Width	1000mm	1000mm
Panel Thickness	35-68mm	35-68mm
Max No. of Panels	8 each direction	8 each direction

Hardware Specifications - Timber Panels

Track:	180	250
Material	Aluminium in Mill or Clear Anodised	
Standard Lengths	2000mm, 3000mm, 4000mm and 6000mm	

Hanger Sets:

Intermediate Hanger Set:	Includes Hanger, Guide and Hinge BW54-50H	BW54-100H
End Hanger Set:	Includes Hanger and Guide BW52-50H	BW52-75H (75kg) BW52-100H (100kg)

Pivot Set:

Top & Bottom Pivots		
BW51-100H	BW51-100H	

Hinge Sets:

Hinge Handle Set	BW3-100H	BW3-100H
Offset Hinge Handle Set	BW7-100H	BW7-100H
Hinge Set	BW5-100H	BW5-100H
Offset Hinge Set	BW6-100H	BW6-100H

Rebated Meeting Door Sets:

2 Hangers and 2 Guides		
BW58-50	BW58-75 (75kg)	BW58-100 (100kg)

Channels:

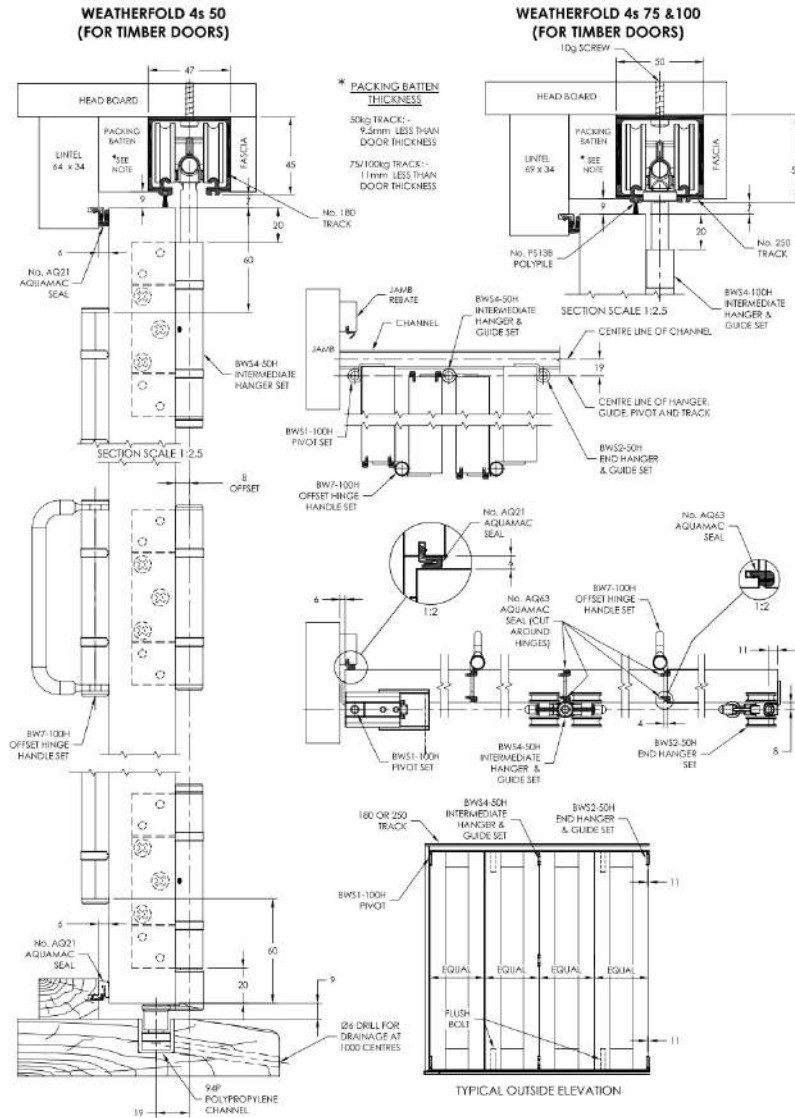
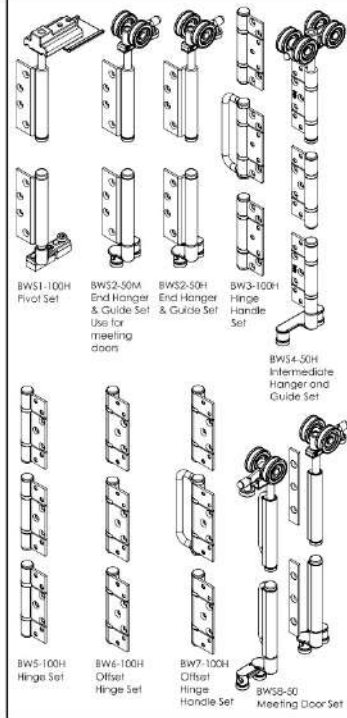
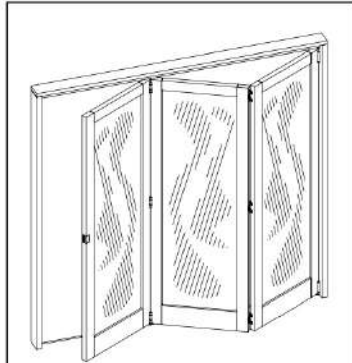
Polypropylene	94P	94P
Polyprop Plus Support	94PPA	94PPA
Aluminium	94A	94A
Standard lengths	2000mm, 3000mm, 4000mm and 6000mm	

Accessories:

Flush Pull	401	401
Flush Bolt - 190mm	456	456
Flush Bolt - 450mm	456L	456L
Mortise Lock	6200	6200
Frame Seal - White	AQ21W	AQ21W
Frame Seal - Brown	AQ21B	AQ21B
Door Seal - White	AQ63W	AQ63W
Door Seal - Brown	AQ63B	AQ63B
Track Seal	PS13B	PS13B

Finish options

Hardware: (SS) Satin Stainless, (PS) Polished Stainless, (PB) PVD Brass.
Flushbolts: (SN) Satin Nickel, (PVD8) PVD Brass.



Codes

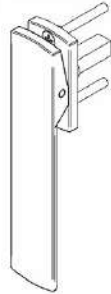
286 L - 25 D PBK — Handle Finish: PBK (Black), PR (Physical Vapour Deposition Black), SN (Satin Nickel), SS (Satin Stainless)
 Tip Type: D (Stainless Steel D-Tip)
 Rod Set Length: 25 (1.5 & 1m Rods for 2.5m panels), 35 (2.5 & 1m Rods for 3.5m panels)
 Handle Type: L (Locking Handle with 30/10 Cylinder), N (Non-Locking Handle)
Dual Point Lock

Components no finishes shown.

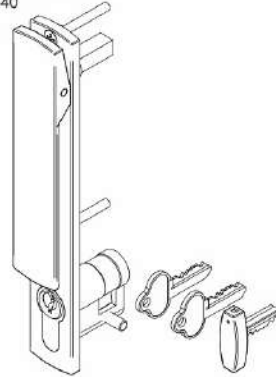
**ALUMINIUM LOCK BODY
286A**



**NON-LOCKING HANDLE
286N**



**LOCKING HANDLE
286L-40**

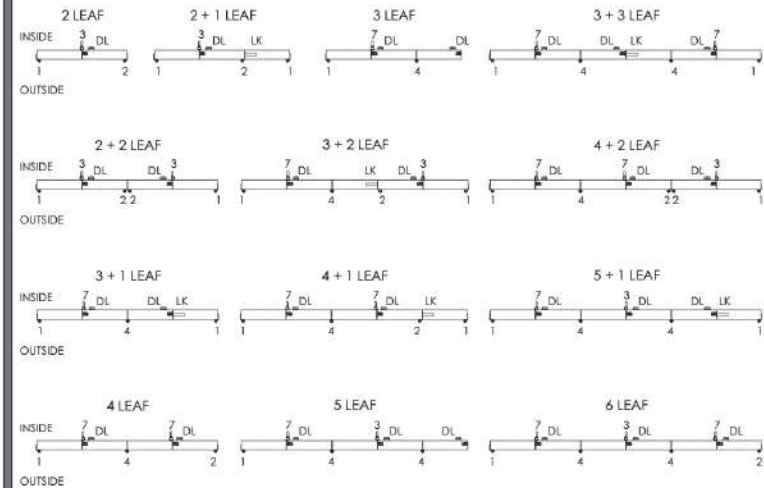


Rod packs

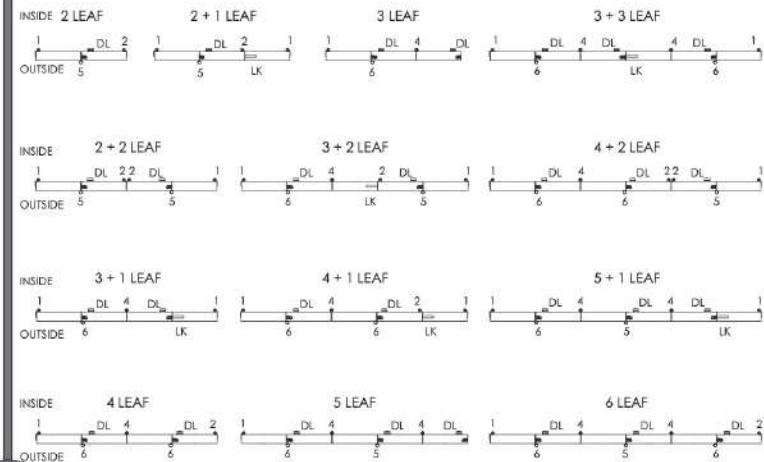
	286-25D	286-35D
ALUMINIUM Ø8[0.315"] ROD & D-TIP ASSEMBLY	1x 1.5m 1x 1.0m	1x 2.5m 1x 1.0m
D-TIP GUIDE	2	2
SCREW PACK	1	1
SPACERS	1	1
DRESS PLATE	2	2
DRILLING JIG & DRILL BIT	1	1

Door Hardware Set Orientation DL = Dual Point Lock, LK = Lock, left systems shown

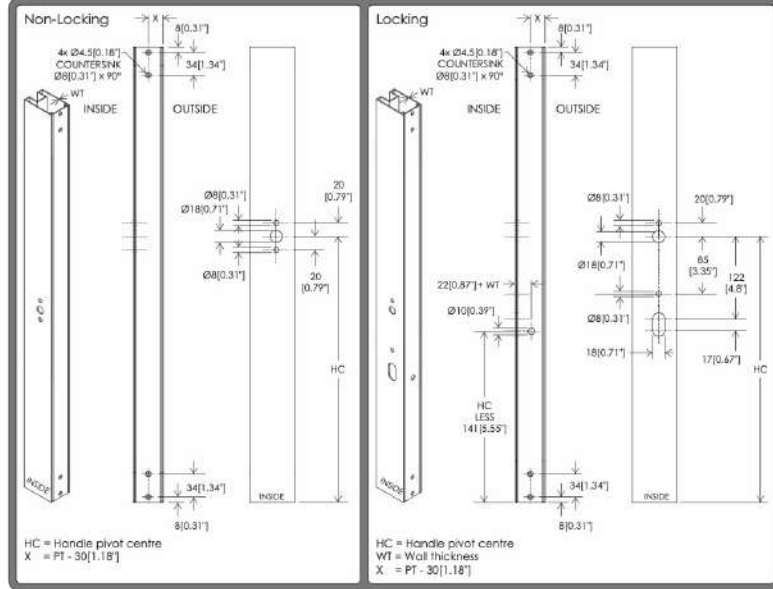
OUTWARD OPENING



INWARD OPENING

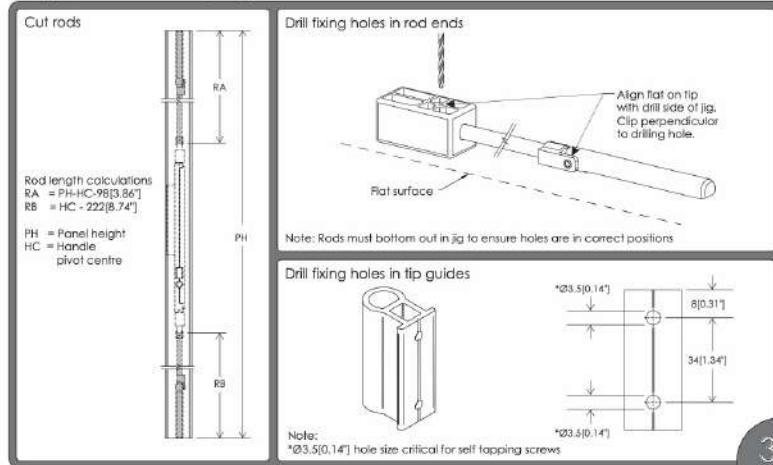


Panel Machining



Prepare rods & tip guides

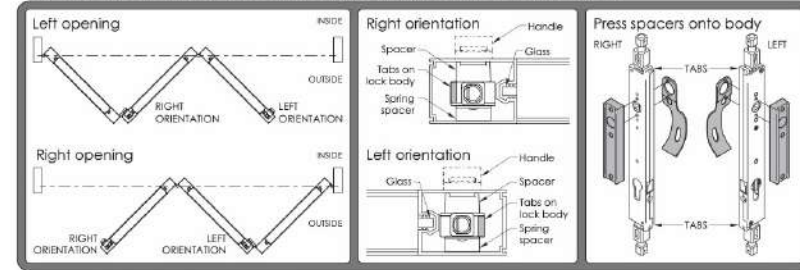
rod drilling jigs & drill bit supplied.



3

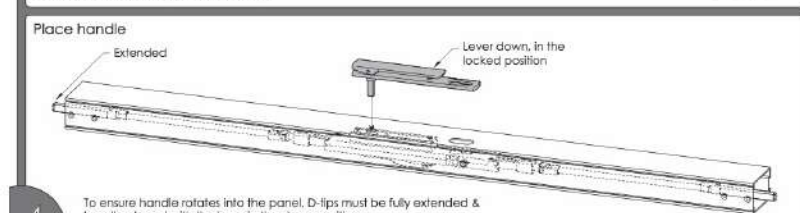
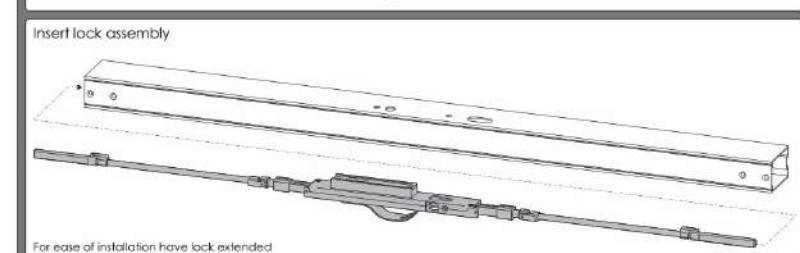
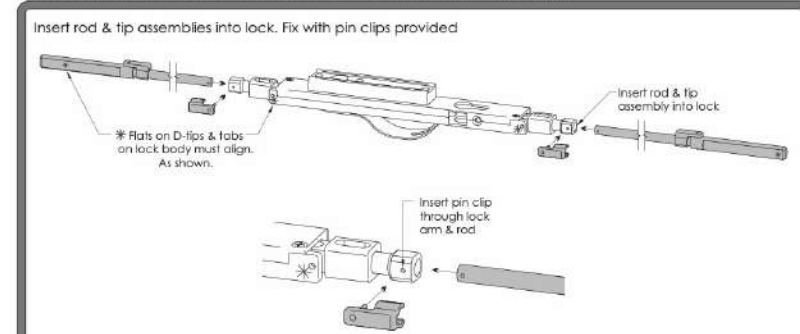
Orientation

tabs on side of lock body are always positioned away from glass.



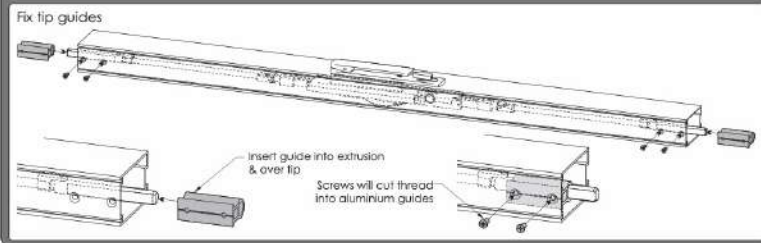
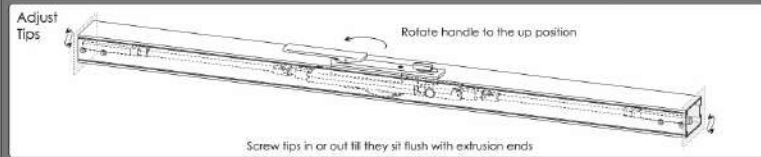
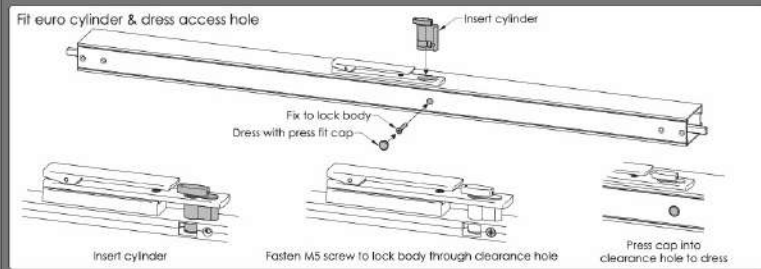
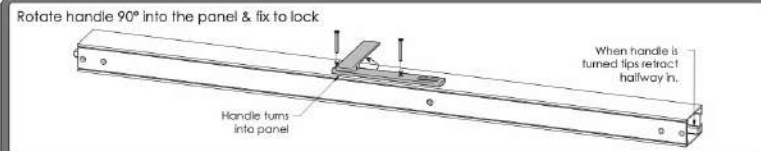
Assembly & Installation

left orientation, locking handle shown.

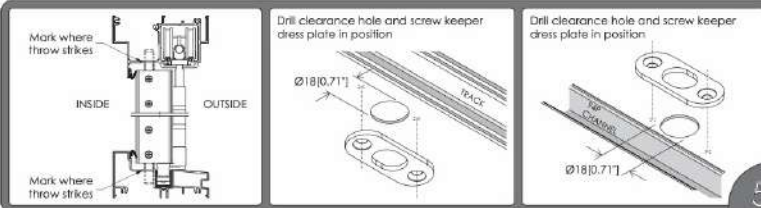


4 To ensure handle rotates into the panel, D-flips must be fully extended & handle placed with the lever in the down position.

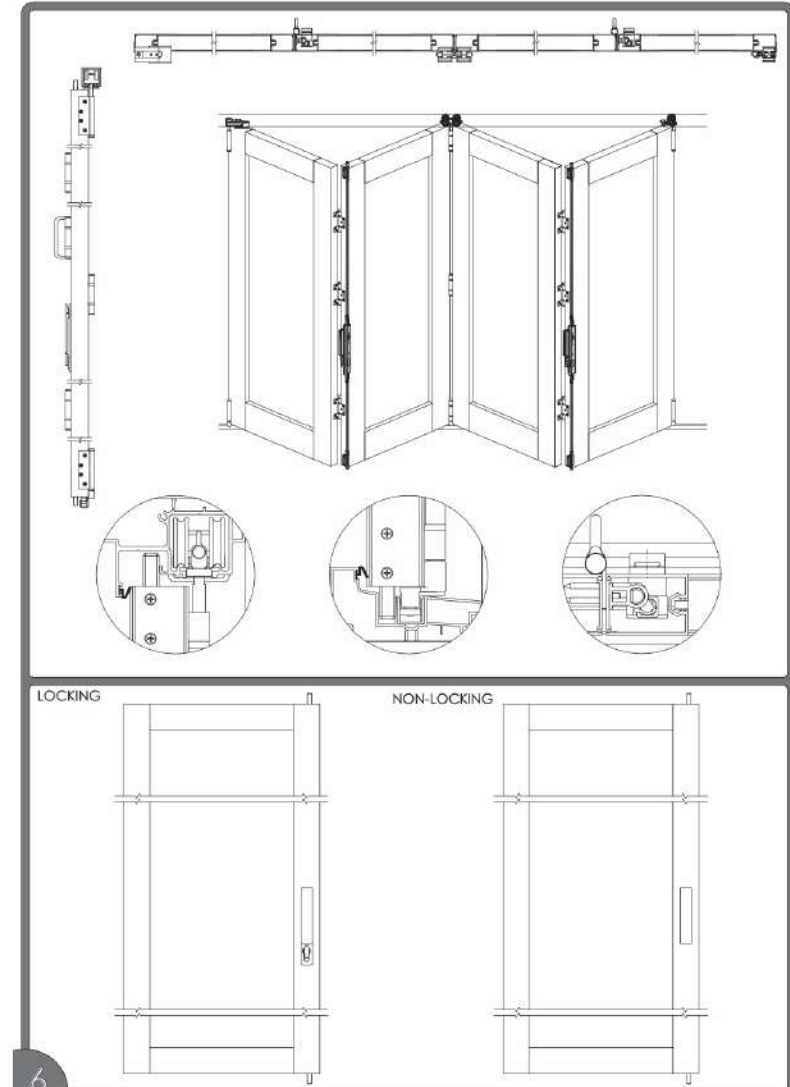
Assembly & Installation continued.

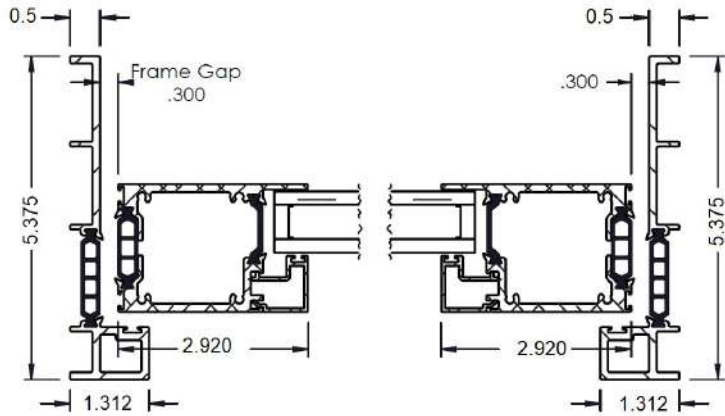


Install keeper plate

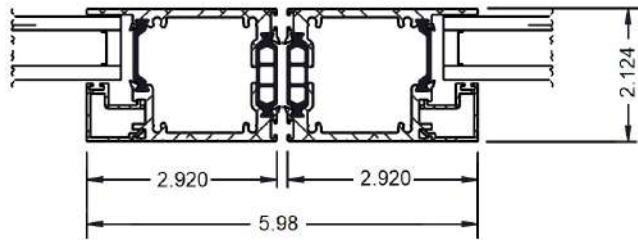


Overview

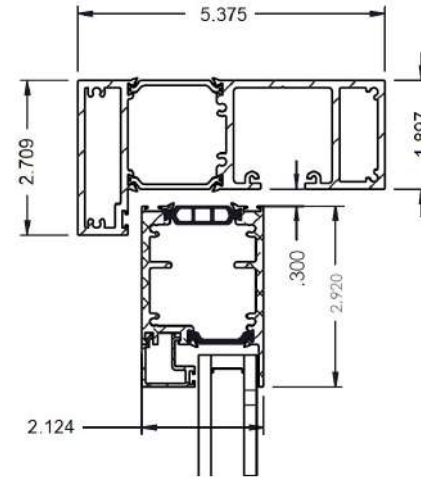




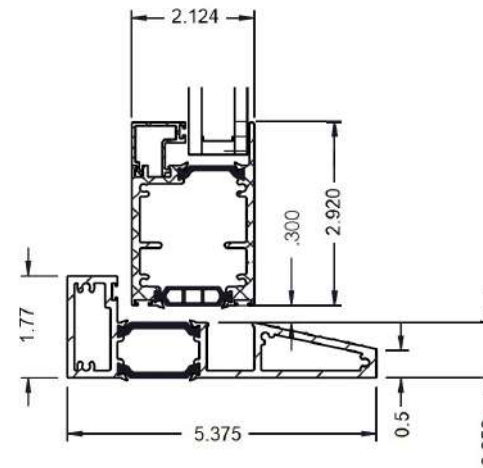
Frame Jamb/ Panel Stile



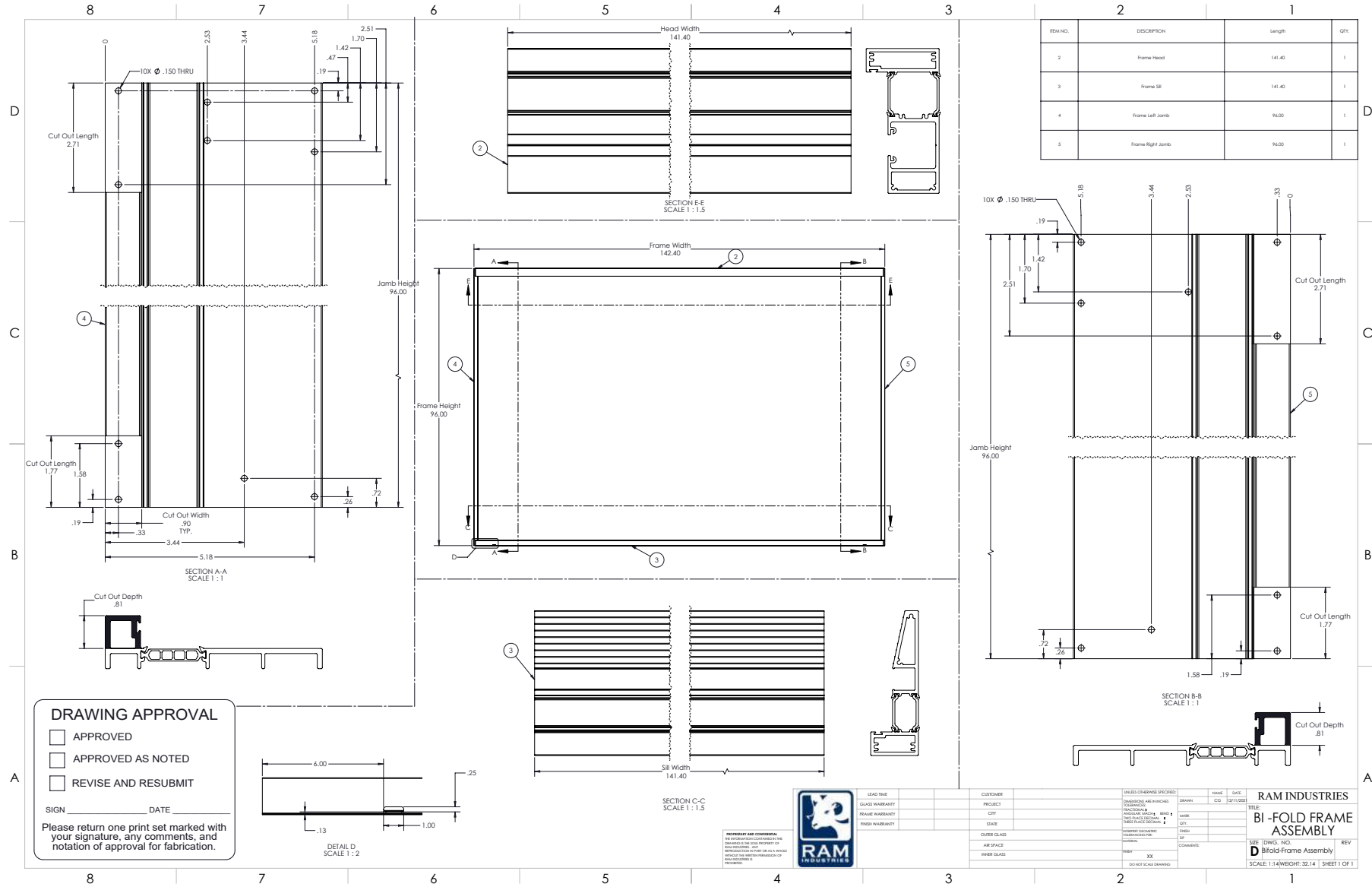
Internal Stile Condition



Bifold Frame Head / Top Rail



Bifold Frame Head / Bottom Rail



ITEM NO.	DESCRIPTION	Length	QTY
2	Frame Head	141.40	1
3	Frame SB	141.40	1
4	Frame Left Jamb	96.00	1
5	Frame Right Jamb	96.00	1

DRAWING APPROVAL

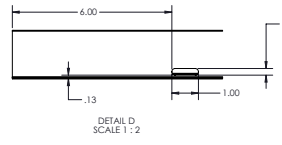
APPROVED

APPROVED AS NOTED

REVISE AND RESUBMIT

SIGN _____ DATE _____

Please return one print set marked with your signature, any comments, and notation of approval for fabrication.



RESERVED AND CONSIDERED AS PROPERTY OF THE COMPANY. USE OF THIS DRAWING FOR ANY OTHER PROJECT WITHOUT THE WRITTEN PERMISSION OF RAM INDUSTRIES IS PROHIBITED.



LEAD TIME	
GLASS WARRANTY	
FRAME WARRANTY	
FINISH WARRANTY	

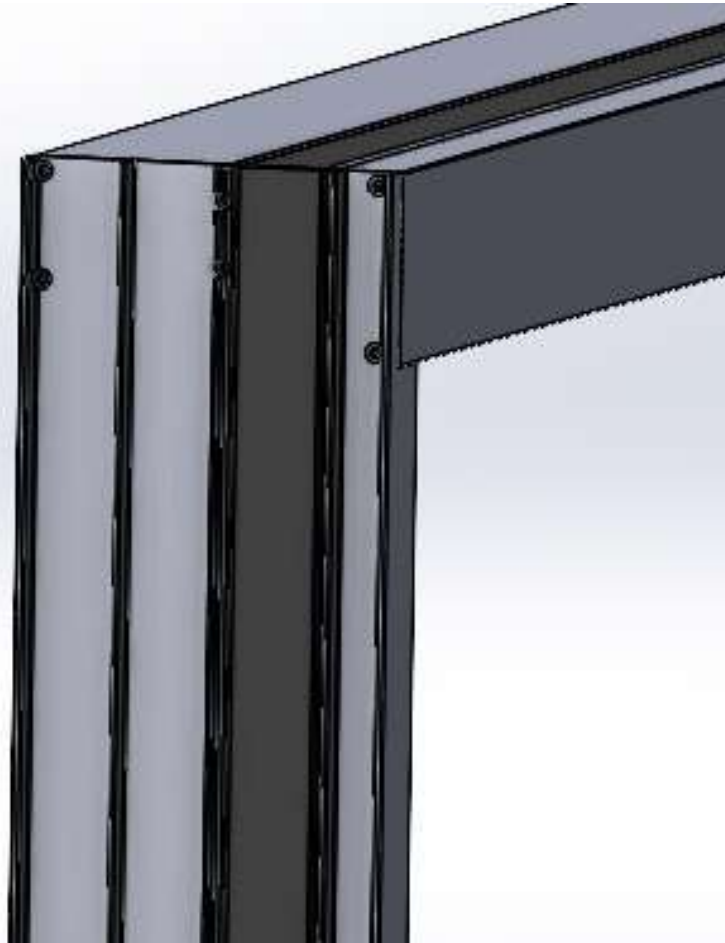
CUSTOMER	
PROJECT	
CITY	
STATE	
CLIENT GLASS	
INNER GLASS	
EXTER GLASS	

UNLESS OTHERWISE SPECIFIED	NAME	DATE
ALL DIMENSIONS ARE IN INCHES UNLESS OTHERWISE SPECIFIED	DRWEN	CG
INDICATED BY THIS SYMBOL	NAME	
INDICATED BY THIS SYMBOL	CITY	
INDICATED BY THIS SYMBOL	STATE	
INDICATED BY THIS SYMBOL	ZIP	
INDICATED BY THIS SYMBOL	COMPANY	

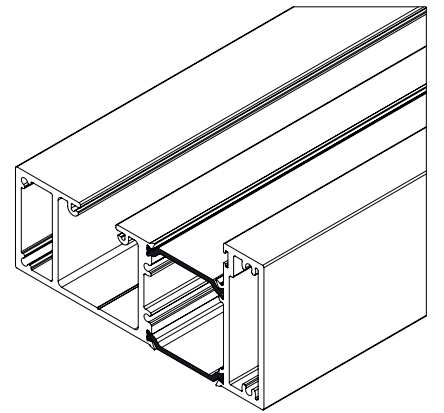
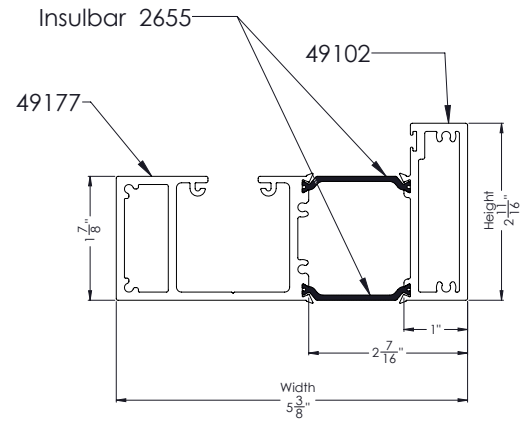
RAM INDUSTRIES

BI-FOLD FRAME ASSEMBLY

SCALE: 1:14 (WEIGHT: 32.14) | SHEET 1 OF 1



BI-FOLD HEAD ASSEMBLY

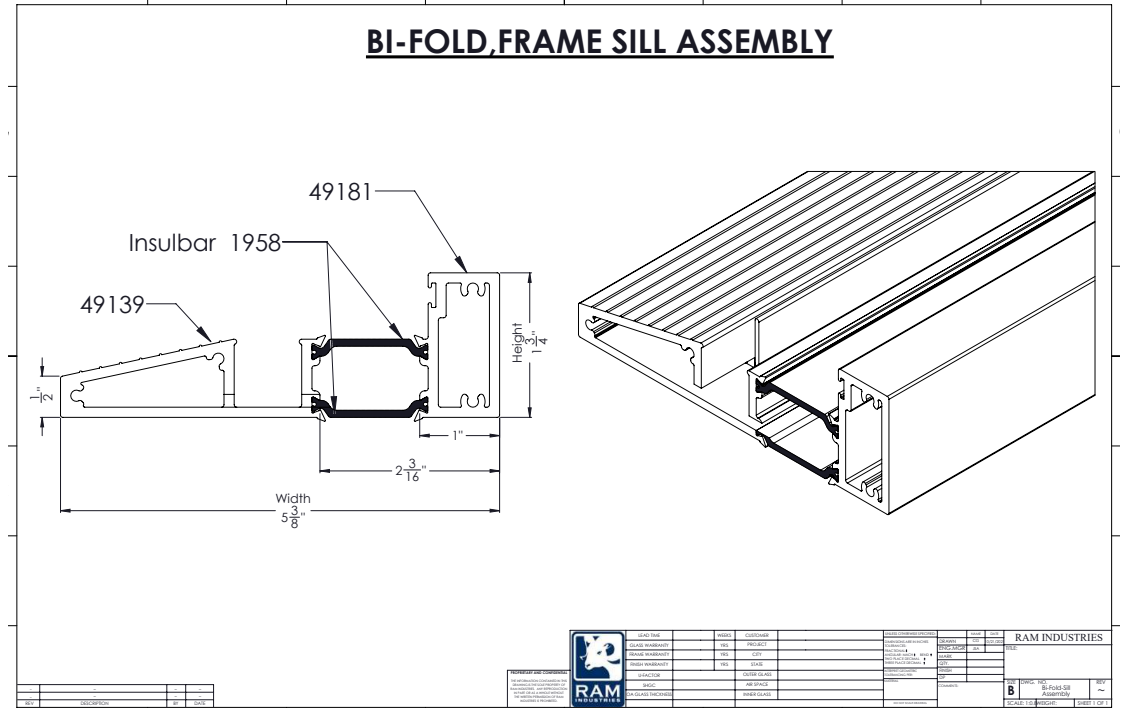


REVISIONS		
NO.	DESCRIPTION	DATE

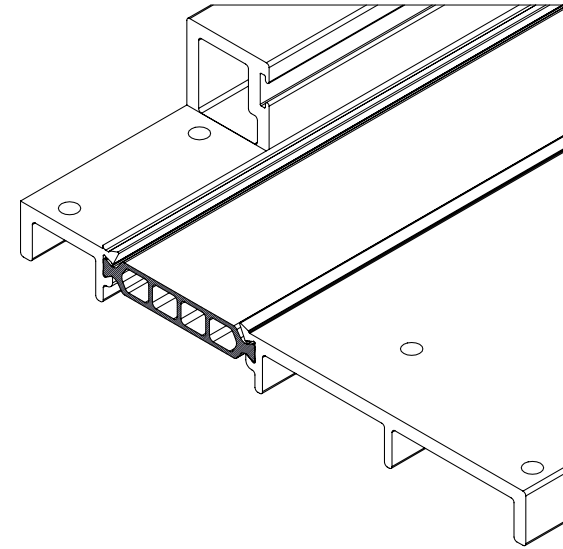
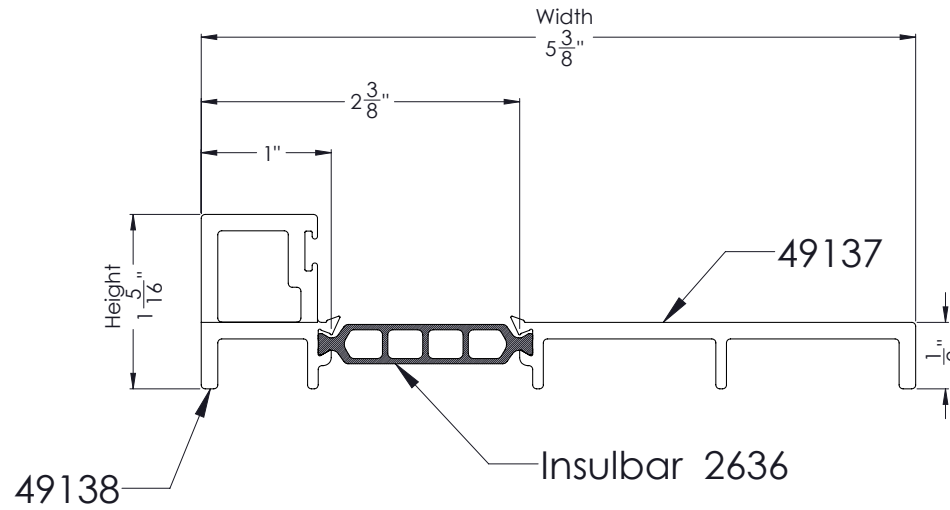


ITEM	DESCRIPTION	QTY	UNIT	REMARKS

<p>RAM INDUSTRIES</p> <p>10000 S.W. 10th St. Ocala, FL 34476 904/349-2500 www.ramindustries.com</p>	<p>DATE: 11/20/10</p> <p>REV: 1</p> <p>DRAWN BY: J. BROWN</p> <p>CHECKED BY: J. BROWN</p>	<p>RAM INDUSTRIES</p> <p>BI-FOLD HEAD ASSEMBLY</p>
---	---	--



BI-FOLD, FRAME JAMBS ASSEMBLY



REV	DESCRIPTION	BY	DATE
-	-	-	-
-	-	-	-
-	-	-	-

PROPRIETARY AND CONFIDENTIAL
 ALL INFORMATION CONTAINED IN THIS DRAWING IS THE SOLE PROPERTY OF RAM INDUSTRIES. ANY REPRODUCTION IN PART OR AS A WHOLE WITHOUT THE WRITTEN PERMISSION OF RAM INDUSTRIES IS PROHIBITED.



LEAD TIME	WEEKS	CUSTOMER	UNLESS OTHERWISE SPECIFIED
GLASS WARRANTY	YRS	PROJECT	UNLESS INDICATED BY INCHES
FRAME WARRANTY	YRS	CITY	INSURANCE: FACTORY & LABOR
FINISH WARRANTY	YRS	STATE	ANGULAR MATCH: 90° ±
U-FACTOR	OUTER GLASS		THREE PLACE DECIMAL: ±
SHGC	AIR SPACE		FINISH
QA GLASS THICKNESS	INNER GLASS		DP
			COMMENTS
			DATE: 08/10/2023

NAME	DATE	RAM INDUSTRIES
DESIGNER	DATE	TITLE:
ENGR-MGR	DATE	
MARK	DATE	
QTY.	DATE	
FINISH	DATE	
DP	DATE	
COMMENTS	DATE	
SCALE: 1:0	WEIGHT:	SHEET 1 OF 1