

COMMERCIAL



WINDOW AND DOOR SOLUTIONS THAT REVOLUTIONIZE STRUCTURES.





MULTI-FAMILY



HOSPITALITY



EDUCATIONAL



CORPORATE



HEALTHCARE

The integral nailing fin designed into each of our aluminum window products offers a significant weatherproofing advantage over traditional storefront products. In addition, our windows are produced in a controlled manufacturing environment resulting in improved quality versus site built storefront systems.

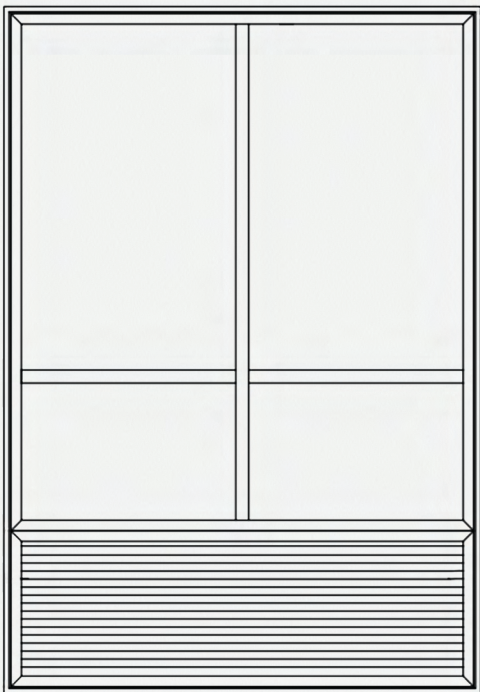
Our popular painted and anodized finishes, large selection of glass options, custom sizes, exceptional weather resistance, superior insulation, low maintenance functionality and enhanced energy performance offer a unique combination for the demanding commercial and civic markets.

**WINDOW AND DOOR SYSTEMS ENGINEERED TO SUPPORT
THE MOST INNOVATIVE COMMERCIAL DESIGNS SINCE 1978.**






LOUVER PTAC UNIT



The Louver PTAC Unit is designed to be combined with a casement, awning or picture window mullied on top, and is ideal for hotels and assisted living facilities. These units are built to accommodate the corresponding PTAC unit and are sized accordingly.

Manufactured with thermally broken, 6063-T5 extruded aluminum frames and Cardinal LoE³-366® ultimate performance glass, RAM's Louver PTAC Unit is approved by all major hotel brands.

PRODUCT INFORMATION

MOUNTING	NAIL FIN APPLICATION
FRAME DEPTH	2 11/16"
JAMB WIDTH	3"
MATERIAL	6063-T5 ALUMINUM
GLASS	CARDINAL LOE ³ -366® ULTIMATE PERFORMANCE GLASS
FINISHES	 BLACK PAINT DK BRONZE PAINT WHITE PAINT DK BRONZE ANODIZED CLEAR ANODIZED
	<i>*CUSTOM COLORS AVAILABLE</i>
IMPACT RESISTANCE	IMPACT-RATED AVAILABLE
SOUND TRANSMISSION CLASS	LAMINATED GLASS WITH HIGHER STC RATINGS AVAILABLE
MAX STC RATING	42
PERFORMANCE DATA *	
AAMA PRODUCT DESIGNATION	AW70
AIR INFILTRATION	<0.10 L/S/M2 (<0.01 CFM/FT2)
WATER RESISTANCE	<0.10 L/S/M2 (<0.01 CFM/FT2)
U-FACTOR	0.35
SHGC	0.25
UNIFORM LOAD DEFLECTION/ STRUCTURAL	<0.10 L/S/M2 (<0.01 CFM/FT2)

**ALL TESTING DATA IS PRELIMINARY, PENDING FINAL CERTIFICATIONS.*

SIZES & CONFIGURATIONS

SIZES	CUSTOMIZABLE STANDARD HEIGHT & WIDTH OPTIONS AVAILABLE
CONFIGURATIONS	CUSTOMIZABLE CONFIGURATIONS AVAILABLE

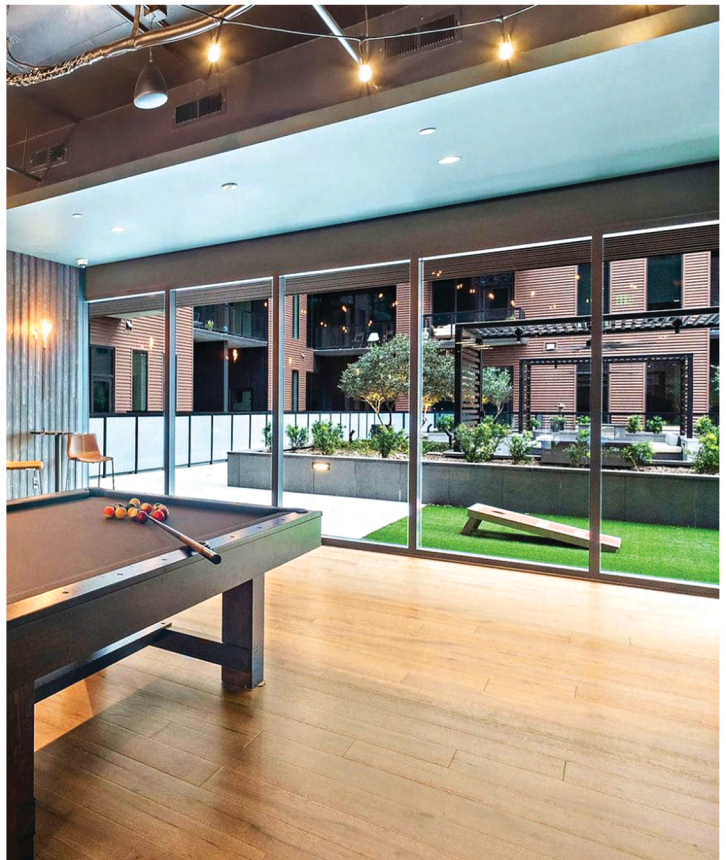






HOUSTON

5615 W FUQUA STREET
HOUSTON | TX | 77085
TEL 281.495.9056



AUSTIN

2201 DENTON DRIVE #114
AUSTIN | TX | 78758
TEL 512.617.2895

DALLAS

134 OAK LAWN AVENUE
DALLAS | TX | 75207
TEL 469.520.7866