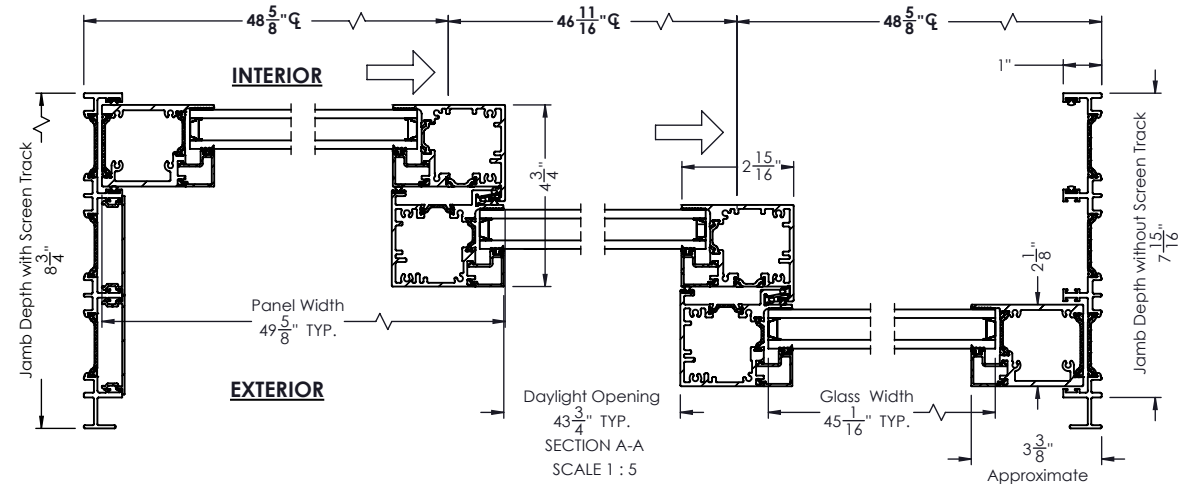
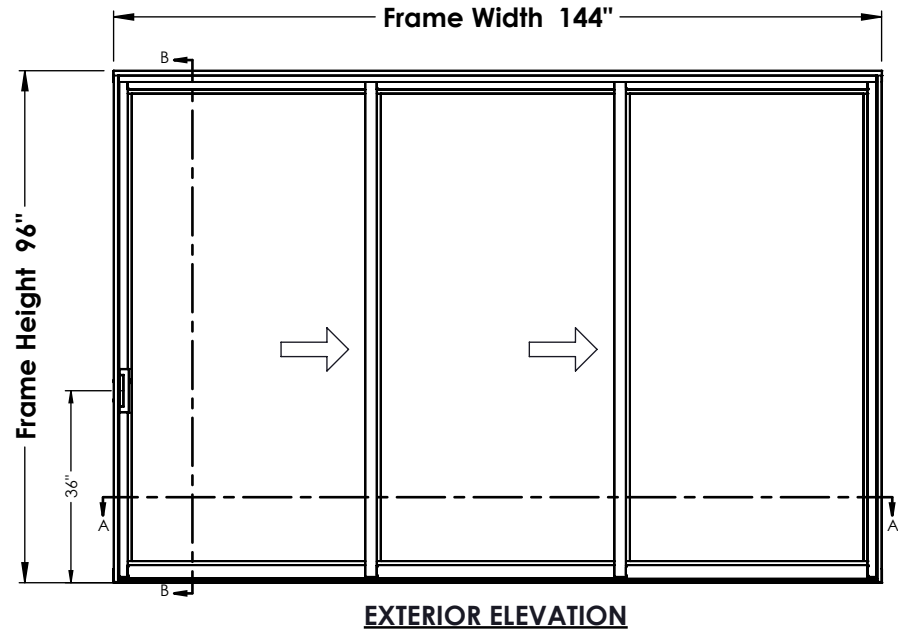
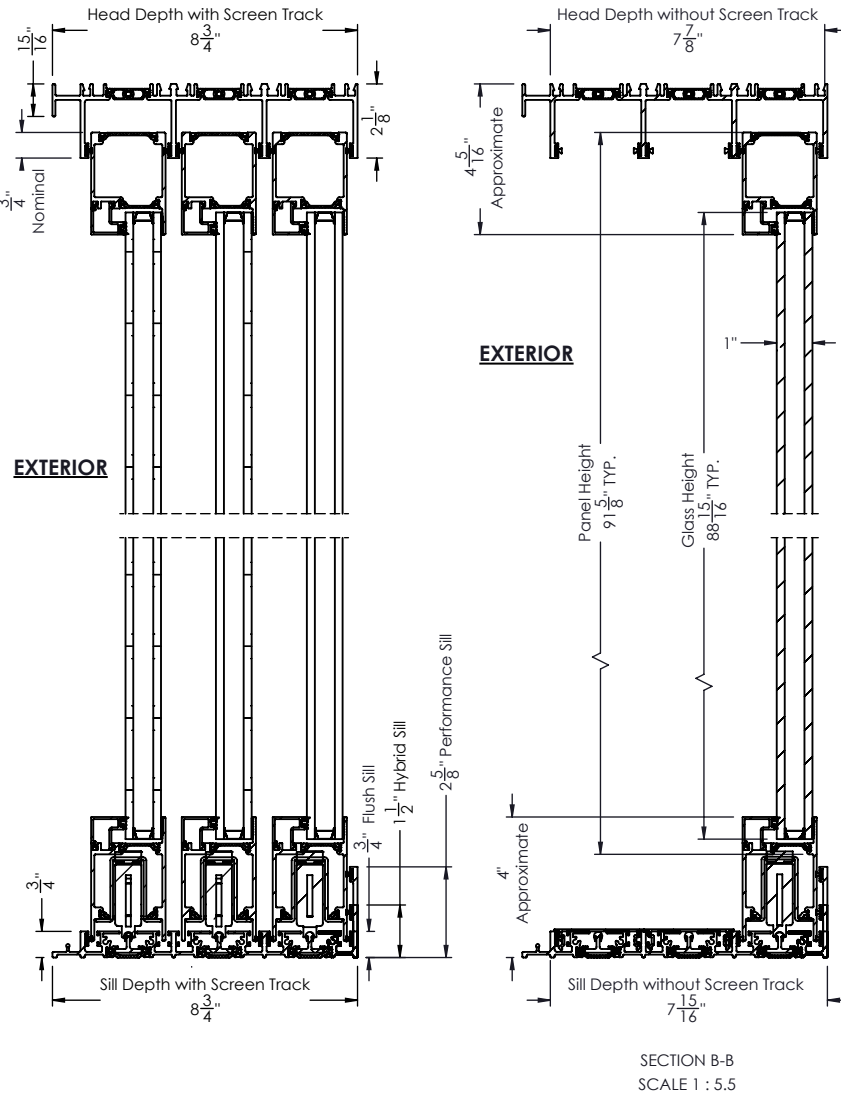


**RAM S3000, XXO SLIDING DOOR**

REVISIONS				
ZONE	REV	DESCRIPTION	DATE	APPROVED
	0	Initial Release	10/19/2023	

**PANELS STACKED**



**PROPRIETARY AND CONFIDENTIAL**

THE INFORMATION CONTAINED IN THIS DRAWING IS THE SOLE PROPERTY OF RAM WINDOWS & DOORS. ANY REPRODUCTION IN PART OR AS A WHOLE WITHOUT THE WRITTEN PERMISSION OF RAM WINDOWS & DOORS IS PROHIBITED.



LEAD TIME		CUSTOMER	RAM S3000	UNLESS OTHERWISE SPECIFIED: DIMENSIONS ARE IN INCHES TOLERANCES:	NAME	DATE
GLASS WARRANTY		PROJECT	XXO SLIDING DOOR		DRAWN	CG
FRAME WARRANTY		CITY		FRACTIONAL: $\pm 1/16$	ENG	
FINISH WARRANTY		STATE		ANGULAR: MACH/BEND: $\pm 1$	MARK	
U-FACTOR		OUTER GLASS		TWO PLACE DECIMAL: $\pm 0.01$	QTY.	
SHGC		AIR SPACE		THREE PLACE DECIMAL: $\pm 0.005$	FINISH	
OA GLASS THICKNESS	1"	INNER GLASS		MATERIAL:	DP	
				DO NOT SCALE DRAWING	SCALE: 1:36	

RAM WINDOWS AND DOORS		
TITLE:		
RAM S3000, XXO SLIDING DOOR		
SIZE	WTS NUMBER	REV
	XXO-Top-Assembly	
	WEIGHT: 713.328	SHEET 1 OF 1