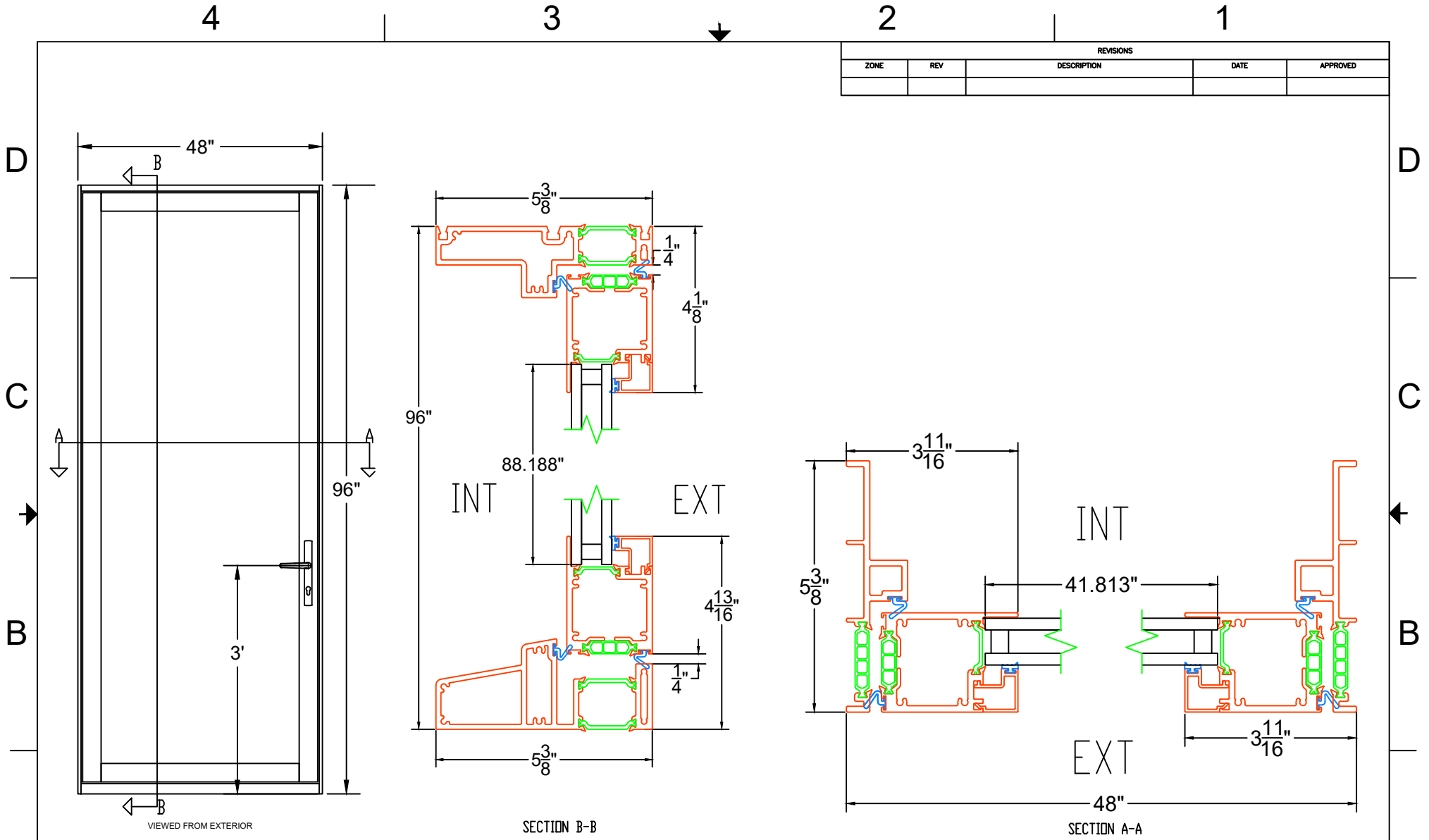



REVISIONS				
ZONE	REV	DESCRIPTION	DATE	APPROVED



PROPRIETARY AND CONFIDENTIAL THE INFORMATION CONTAINED IN THIS DRAWING IS THE SOLE PROPERTY OF RAM INDUSTRIES. ANY REPRODUCTION IN PART OR AS A WHOLE WITHOUT THE WRITTEN PERMISSION OF RAM INDUSTRIES IS PROHIBITED.		LEAD TIME	----	CUSTOMER	----	UNLESS OTHERWISE SPECIFIED: DIMENSIONS ARE IN INCHES TOLERANCES: FRACTIONAL: $\pm \frac{1}{8}$ ANGULAR: $\pm \frac{1}{4}$ TWO PLACE DECIMAL: $\pm .001$ THREE PLACE DECIMAL: $\pm .0005$	NAME	J.LEE	DATE	9/5/23	RAM WINDOWS AND DOORS TITLE: SWING DOOR MASTER OS- STANDARD SILL		
		GLASS WARRANTY	----	PROJECT	Website Details		DRAWN	MARK	FINISH	DP		SCALE	SIZE
		FRAME WARRANTY	----	CITY	Houston		MATERIAL:	DO NOT SCALE DRAWING	WTS NUMBER	0202020	REV		
		FINISH WARRANTY	----	STATE	Texas		DO NOT SCALE DRAWING		WEIGHT		SHEET	OF	
U- FACTOR	----	OUTER GLASS	----										
DA GLASS THICKNESS	1"	AIR SPACE	----										
		INNER GLASS	----										