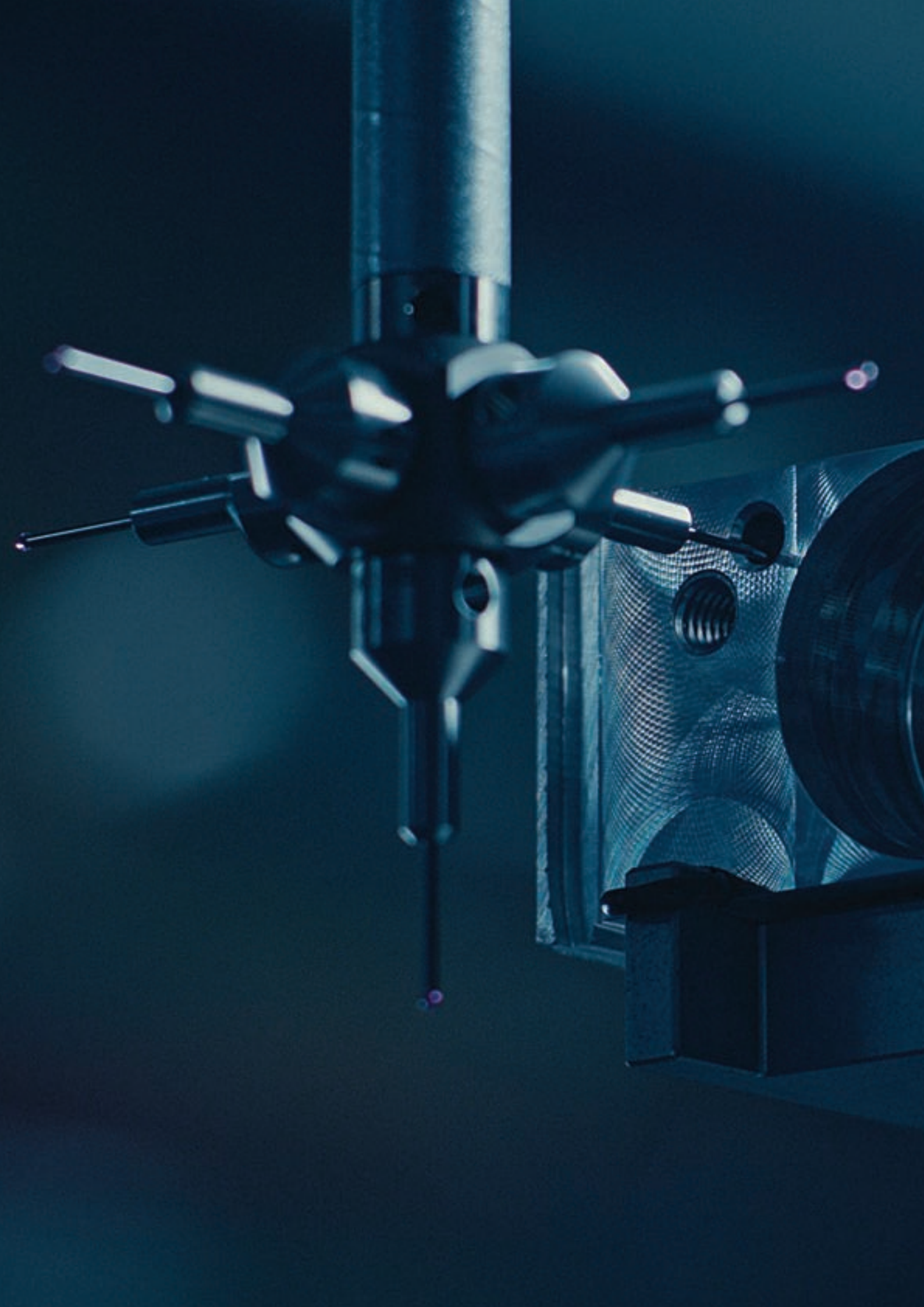




**FritsJurgens<sup>®</sup>**

**SYSTEM ONE**

TECHNICAL DATA SHEET



FROM THE NETHERLANDS, FRITSJURGENS CREATES PIVOT HARDWARE SOLUTIONS OF THE HIGHEST POSSIBLE QUALITY THAT EXCEED INDUSTRY STANDARDS AND OUR CLIENT'S EXPECTATIONS. THESE SOLUTIONS ENABLE ENDLESS PIVOT DOOR DESIGN POSSIBILITIES.

- |                          |  |
|--------------------------|--|
| <b>Hidden hardware</b>   | Only small floor and ceiling plates are visible. All the hardware is hidden in the door.                     |
| <b>Unlimited design</b>  | The door can be of any height and made with every type of material, creating unlimited design possibilities. |
| <b>Motion technology</b> | Motion technology puts hydraulic power to use, creating a smooth and controlled door movement.               |
| <b>Timeless quality</b>  | Built from high-performance materials, the systems are maintenance-free and perform flawlessly.              |

#### CONTINUOUS IMPROVEMENT

---

FritsJurgens strives for the best quality possible. Every system that leaves the FritsJurgens headquarters is designed, fabricated, and tested with the greatest attention to detail and with only the best quality materials. This enabled us to create maintenance-free hinges: even after 136 years of daily use, the hinge will still function flawlessly.

#### WORLDWIDE NETWORK

---

Architects, designers, and door manufacturers worldwide work with FritsJurgens. Our pivot hinges are available through a trusted partner-network in 80+ countries.

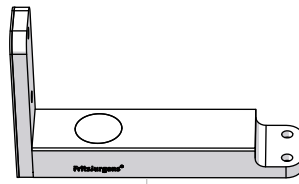


# OVERVIEW

The most ideal pivot hinge for narrow profile doors. With a height of just 18 mm, this pivot hinge can be applied in a broad range of pivot door designs and applications.

## COMPONENTS

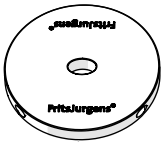
- 1.1 Bottom pivot System One 40 mm
- 1.2 Bottom pivot System One 70 mm
- 2.1 Floor plate - Round
- 2.2 Floor plate - Squared
- 2.3 Floor plate - Squared NA
- 2.4 Floor plate - Flush squared
- 2.5 Floor plate - Flush rounded



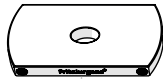
1.1



1.2



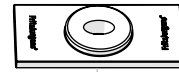
2.1



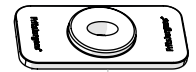
2.2



2.3

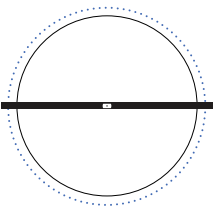


2.4

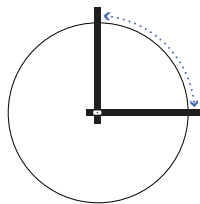


2.5

## FUNCTION

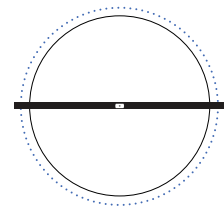


- Double-acting doors
- Rotation 360°



- Single-acting doors
- Rotation 90°

## MOVEMENT



360° free-swinging pivot

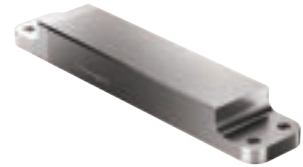
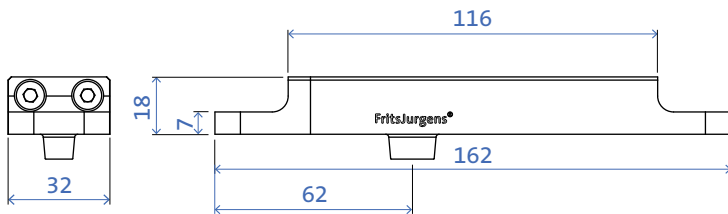
# VARIANTS

## WEIGHT OF THE DOOR

Class G | 0 - 500 kg

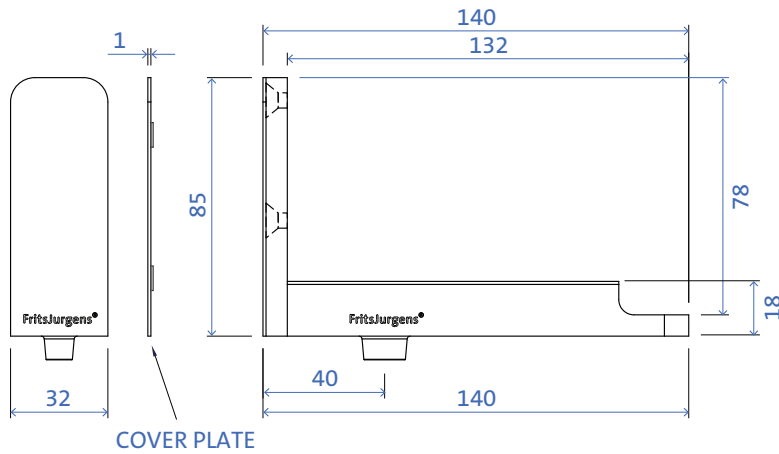
### 70 MM

Side or middle placement, pivot position at least 70 mm from the edge of the door.



### 40 MM

Side placement, pivot position at 40 mm from the edge of the door.



# TECHNICAL SPECIFICATION

---

## FEATURES

---

**Rotation** 360° and 90°

---

**Hold position** No

---

**Free swing** Yes

---

**Self-closing** No

---

**For double acting doors** Yes

---

**For single acting doors** Yes

---

**For door frame/jambs** Yes

---

**Door weight** 0 - 500 kg

---

## SPECIFICATION

---

**Weight class** 1 class, G

---

**Pivot point possibilities** 40 mm, 70 mm, offset, max. middle of the width

---

**Floor plate compatibility** Floor plate squared NA & all floor plates of System M family

---

**Top pivot compatibility** TP-40, TP-70, TP-R, TP-CG

---

## GAPS OVERVIEW

---

**Gap below the door** 7 mm (Floor plate Flush) or 11 mm (Floor plate squared, round)

---

**Required gap above the door** 4 mm - 10 mm

---

**Material of the product** Stainless steel, anodized aluminum

---

**Minimum gaps left/right** Depends on door thickness, see Gap Calculator

# HINGE PLATES

## Floor plates



Floor plate squared NA  
Stainless Steel



Floor plate squared  
Black



Floor plate round  
Stainless Steel



Floor plate round  
Black




Floor plate Flush rounded

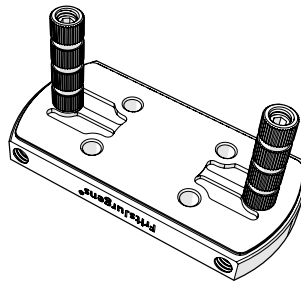
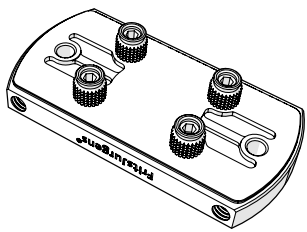
Sunk into door frame or floor, so flush with surrounding area. Ideal for drop seals.



Floor plate Flush squared

Sunk into door frame or floor, so flush with surrounding area. Ideal for drop seals.

 Shown are the number of mounting pins included in the package, pre-mounted plus any additional ones. Floor plate squared comes with extra pins for different floor types.



## Cover plates for System One 40 mm



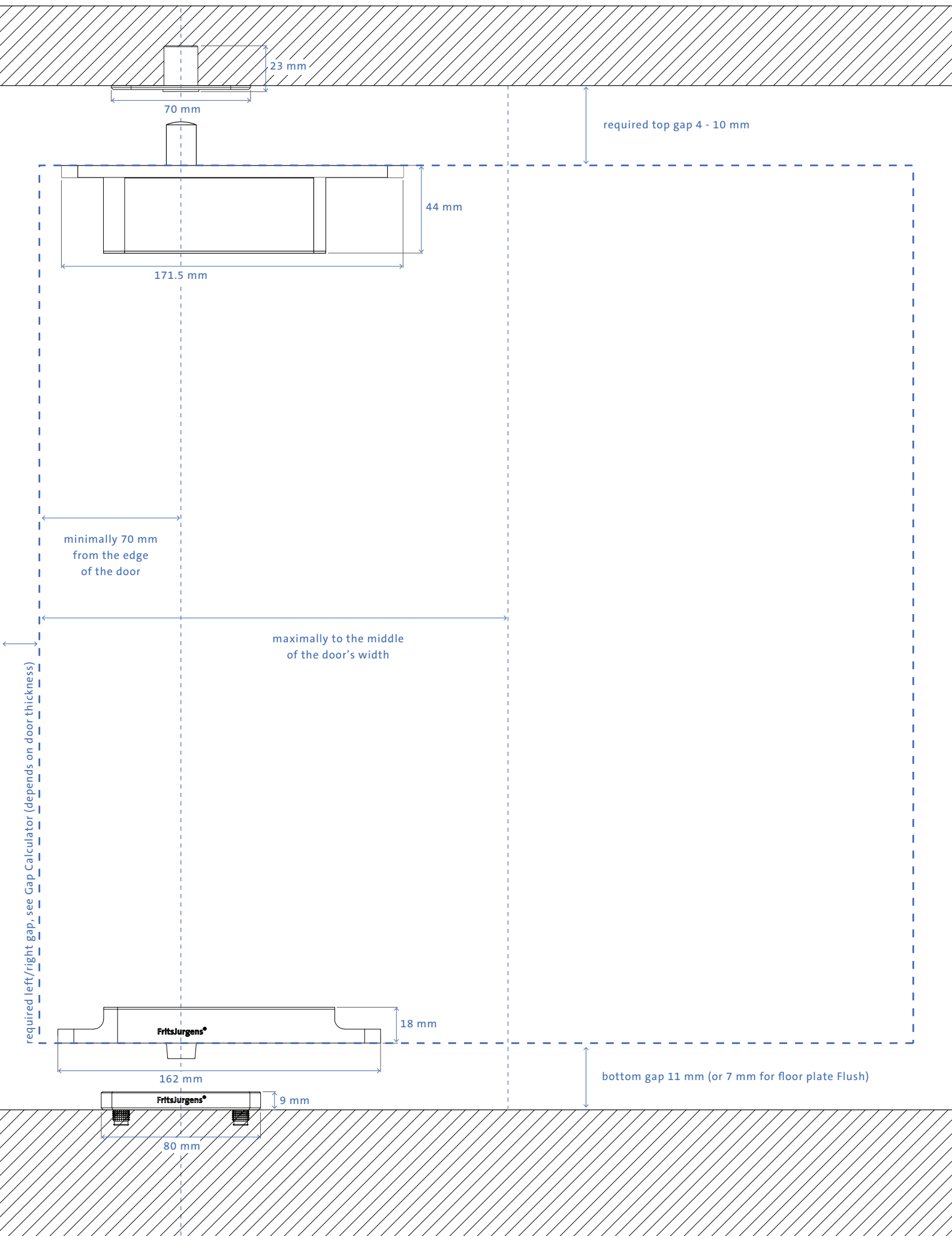
SS  
Stainless steel cover plate



BK  
Black cover plate

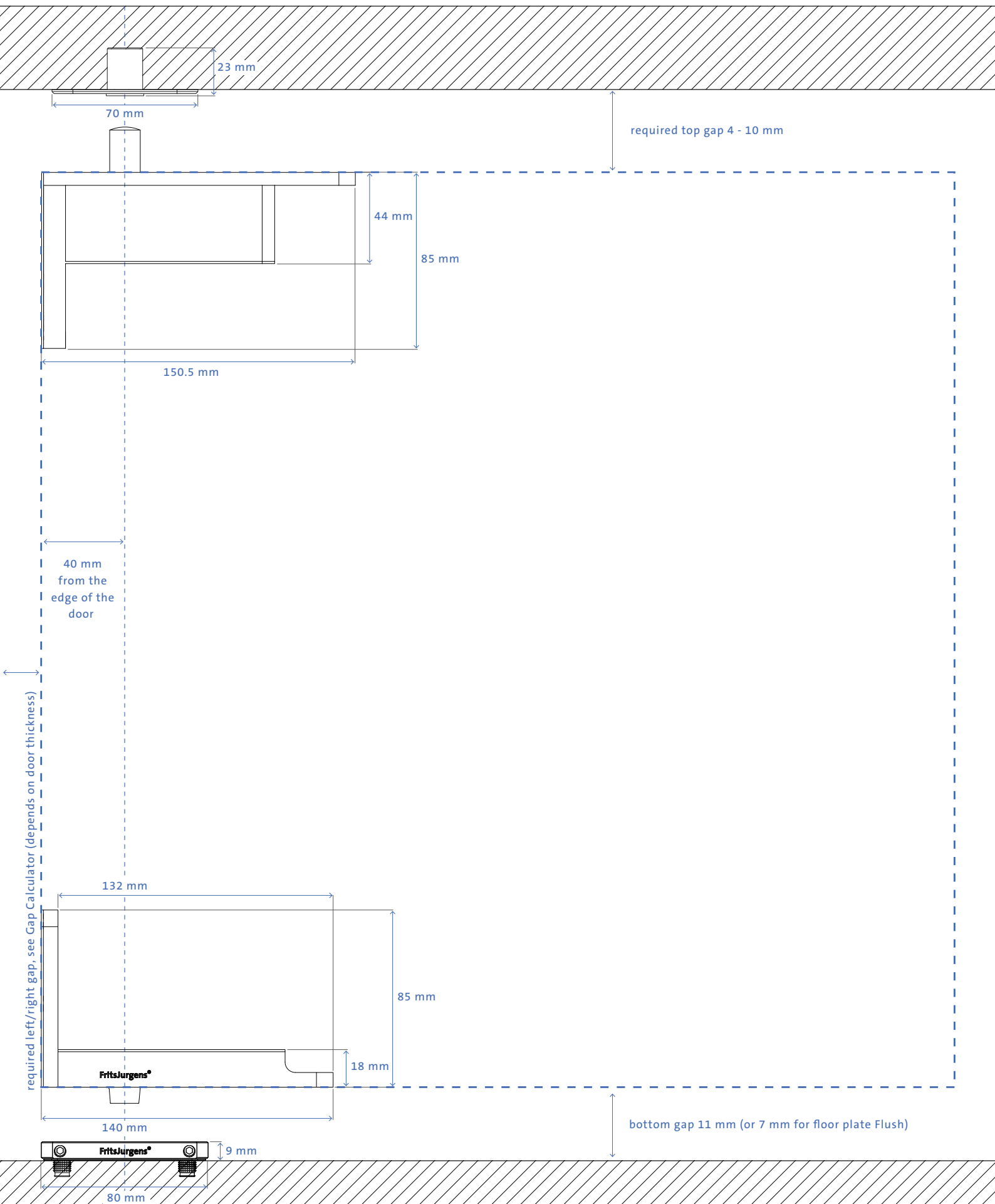
# CONFIGURATIONS

System One, pivot position  $\geq 70$  mm (Class G), non adjustable floor plate

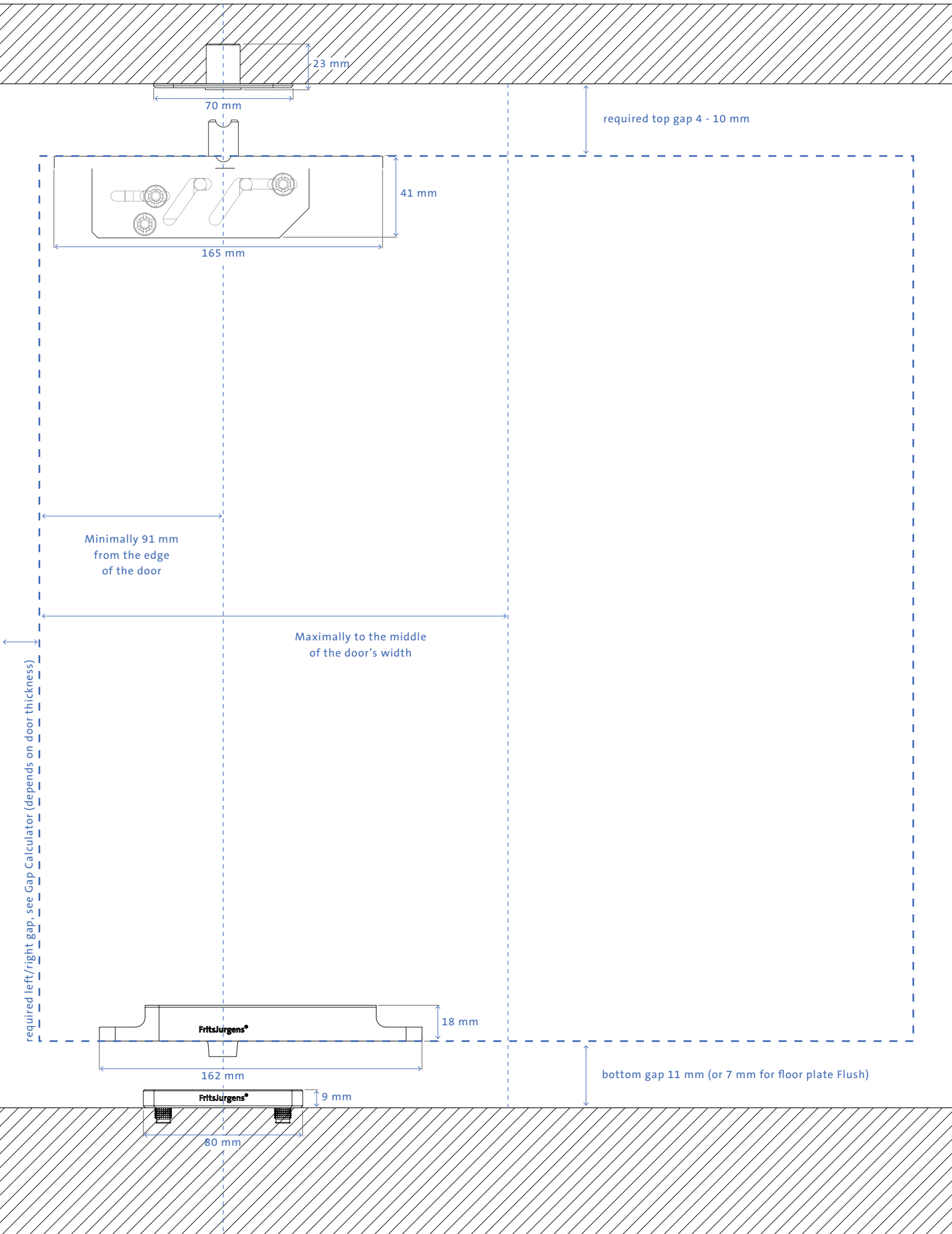




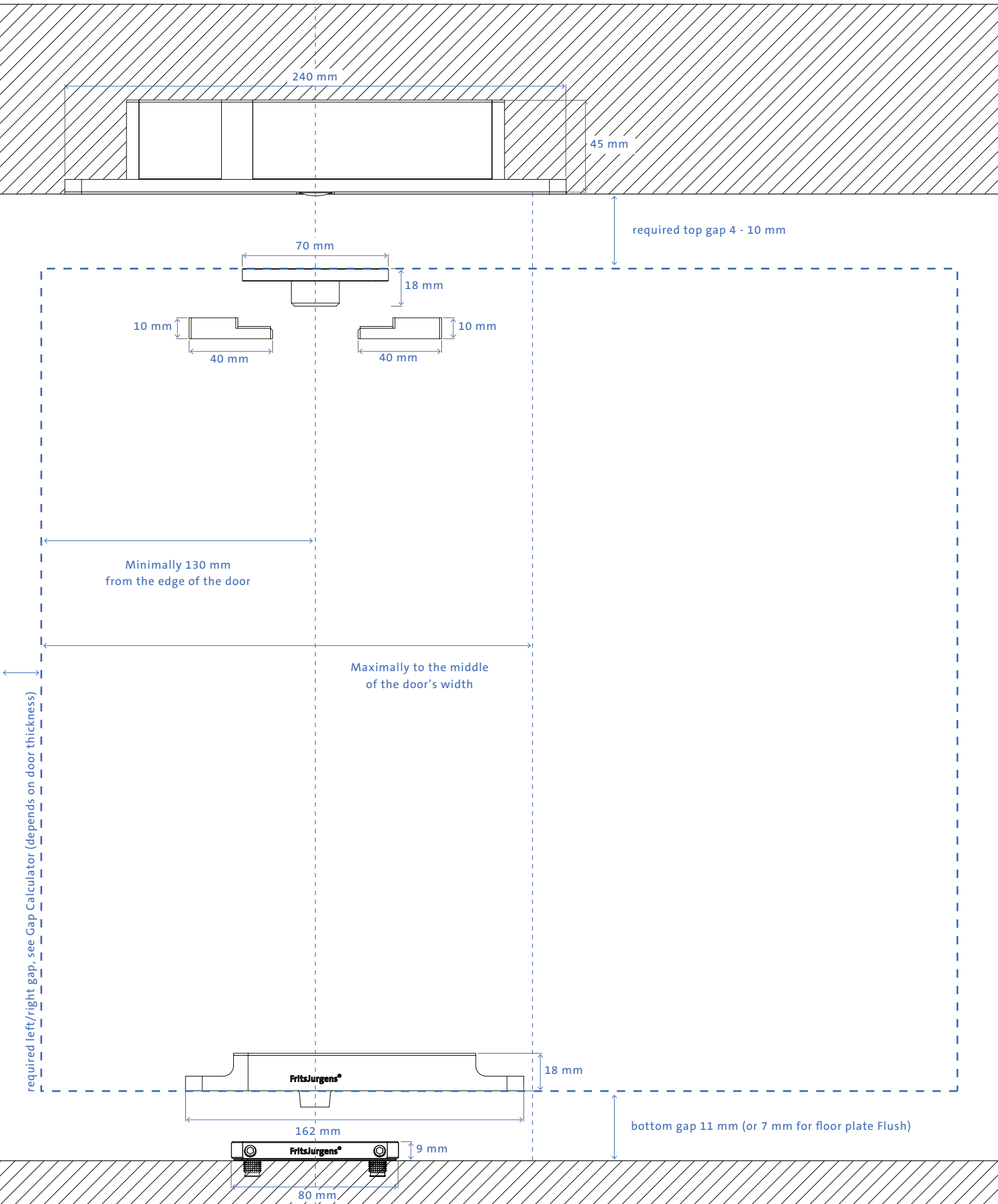
System One, pivot position 40 mm (Class G), floor plate squared



System One, pivot position  $\geq 91$  mm with Cable Grommet (Class G), non adjustable floor plate



System One with TP-R (Class G), floor plate squared



# FritsJurgens®

## FRITSJURGENS INTERNATIONAL

A. Einsteinlaan 1  
9615 TE Kolham  
The Netherlands  
+31 598 343 410  
info@fritsjurgens.com

## FRITSJURGENS ITALIA (REGIONAL SALES OFFICE)

Via Marsilio Ficino 22  
50132 Firenze  
Italy  
+39 055 064 0290  
info@fritsjurgens.com

## FRITSJURGENS DUBAI BRANCH

DLC-OP-A2-4-0029  
Dubai South  
Dubai  
United Arab Emirates

BO.tech.One.EN  
Copyright © FritsJurgens®  
31-05-2023





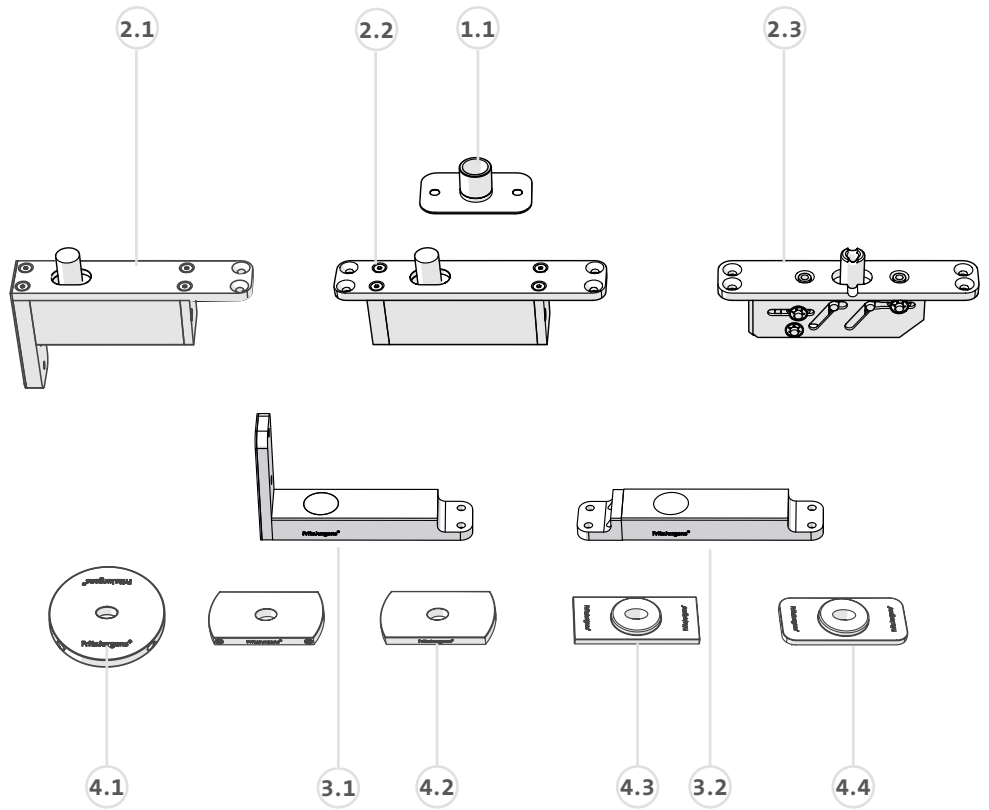
FritsJurgens®

SYSTEM ONE  
MILLING AND MOUNTING MANUAL

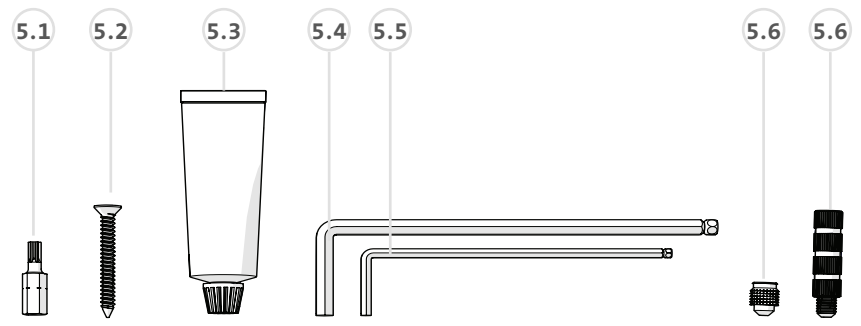
# BOX CONTENTS

## COMPONENTS

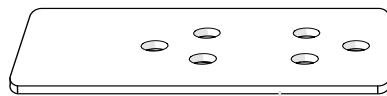
- 1.1 Ceiling plate - Class G
- 2.1 Top pivot 40 mm - Class G
- 2.2 Top pivot 70 mm - Class G
- 2.3 Top pivot Cable Grommet
- 3.1 Bottom pivot System One 70 mm
- 3.2 Bottom pivot System One 40 mm
- 4.1 Floor plate System M - Square Black
- 4.1 Floor plate - Squared NA
- 4.2 Floor plate - Flush squared
- 4.3 Floor plate - Flush rounded



## MILLING AND MOUNTING KIT



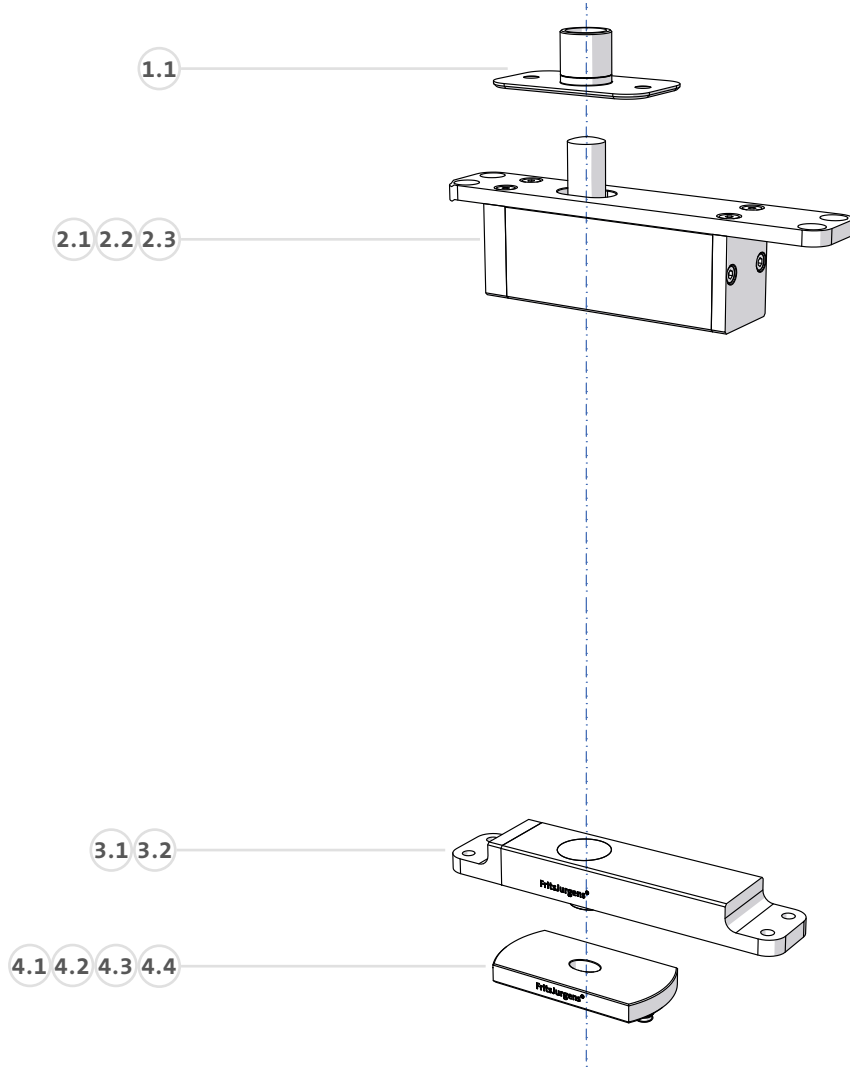
- 5.1 Torx bit TX20 (1x)
- 5.2 Screws (4x50) (10x)
- 5.3 Fitting adhesive
- 5.4 Allen key 5
- 5.5 Allen key 3
- 5.6 Mounting pins, short (2x)
- 5.7 Mounting pins, long\* (2x)
- 5.8 Fitting template



\* Only in box floor plate System M - Squared black and in box floor plate Squared NA

# SYSTEM OVERVIEW

---



---

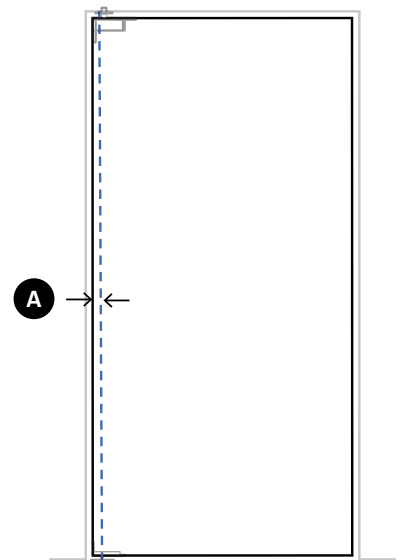
## MILLING INSTRUCTIONS

→ Determine pivot point **A**.

### System One

- $A = 40 \text{ mm}$  → page 4
- $70 \text{ mm} \leq A < 250 \text{ mm}$  → page 6
- $A > 250 \text{ mm}$  → page 8

Top pivot Cable Grommet → page 10



---

## MOUNTING INSTRUCTIONS

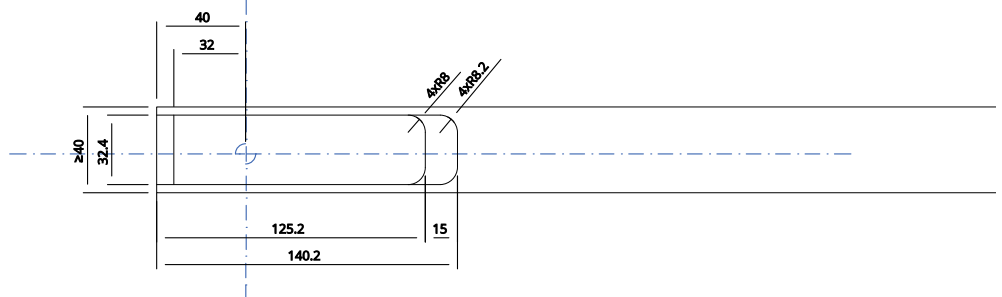
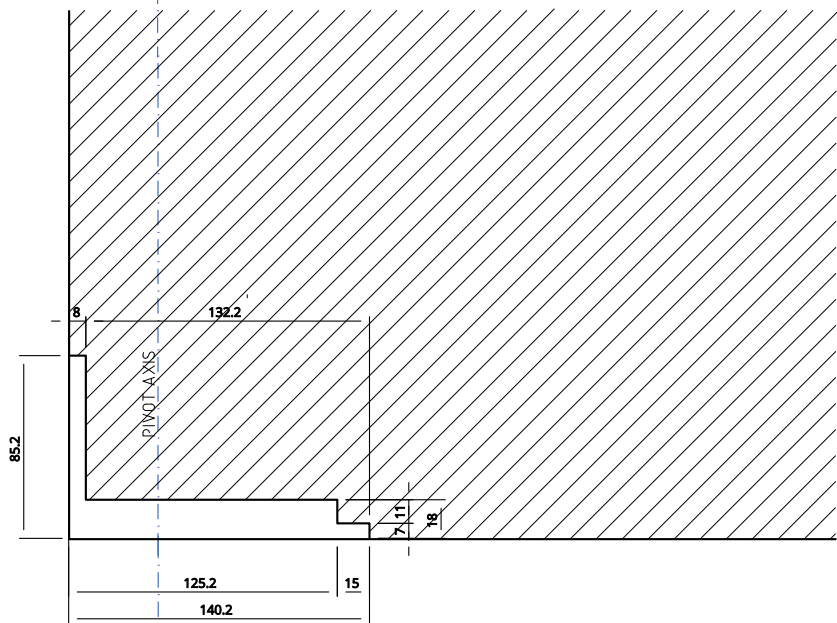
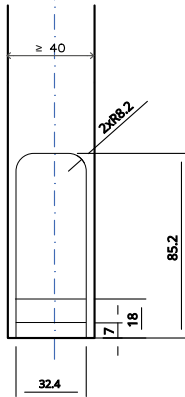
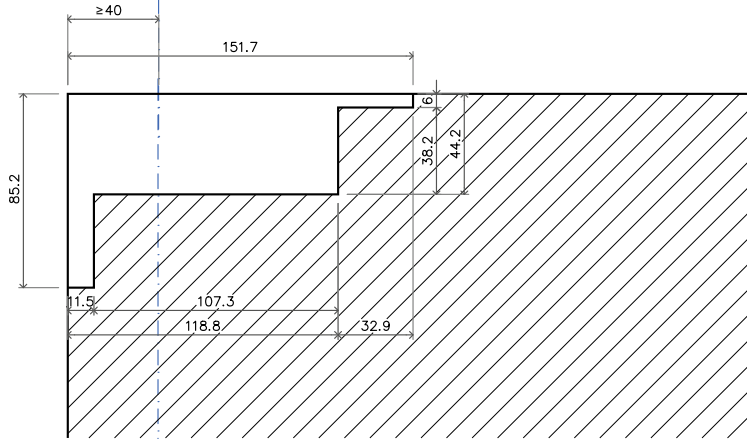
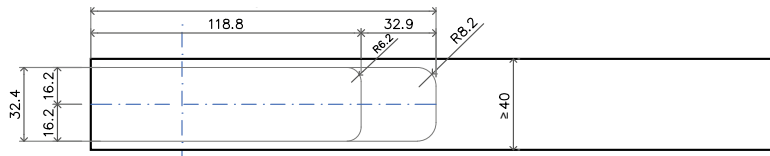
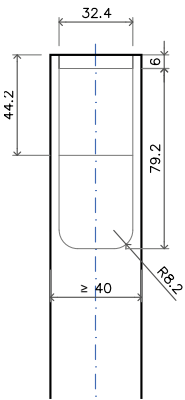
→ page 11

---

# MILLING

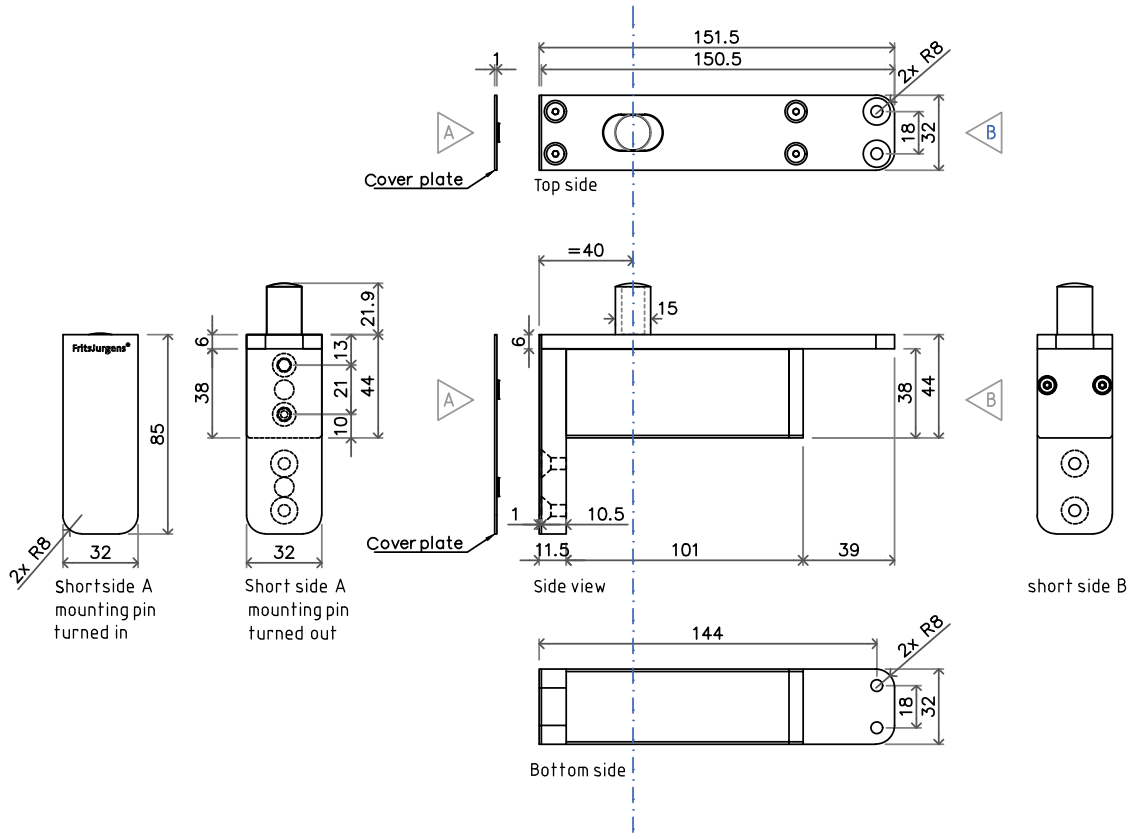
A = 40 MM

PREPARING THE DOOR

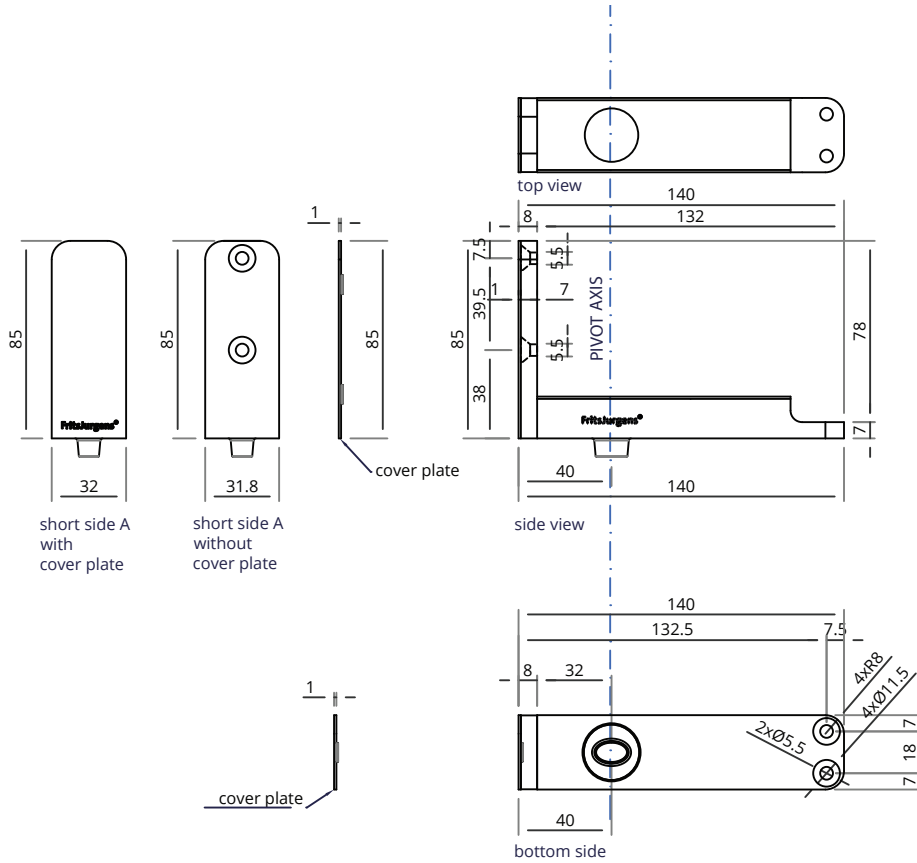




COMPONENTS



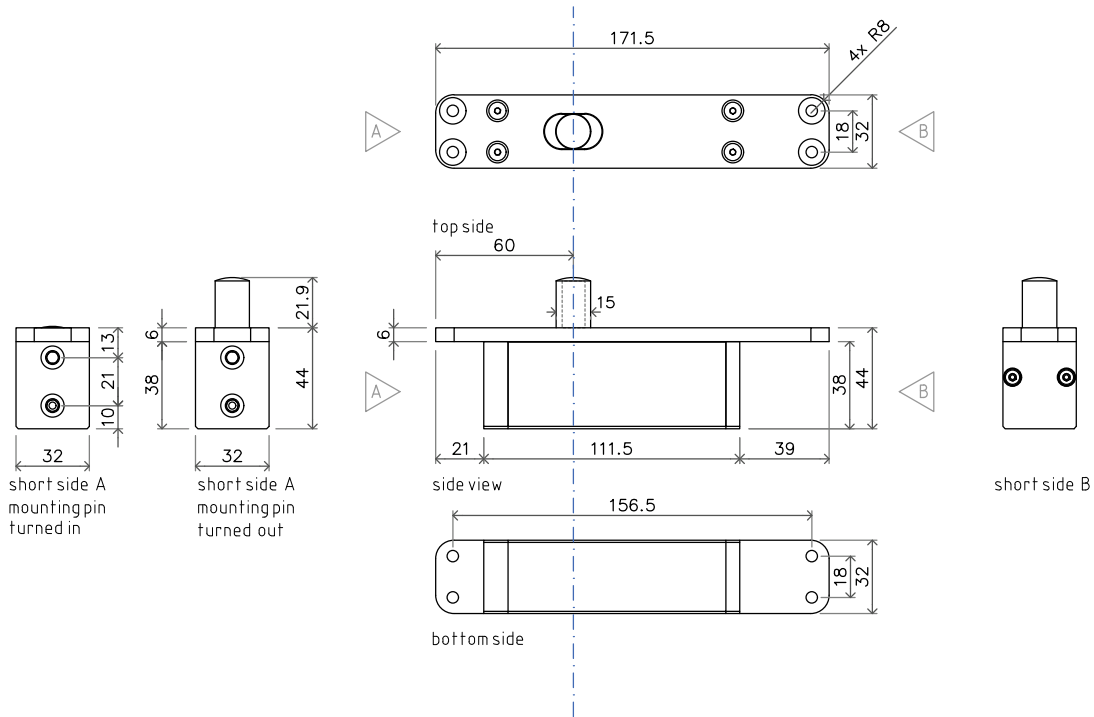
Top pivot 40 mm - Class G



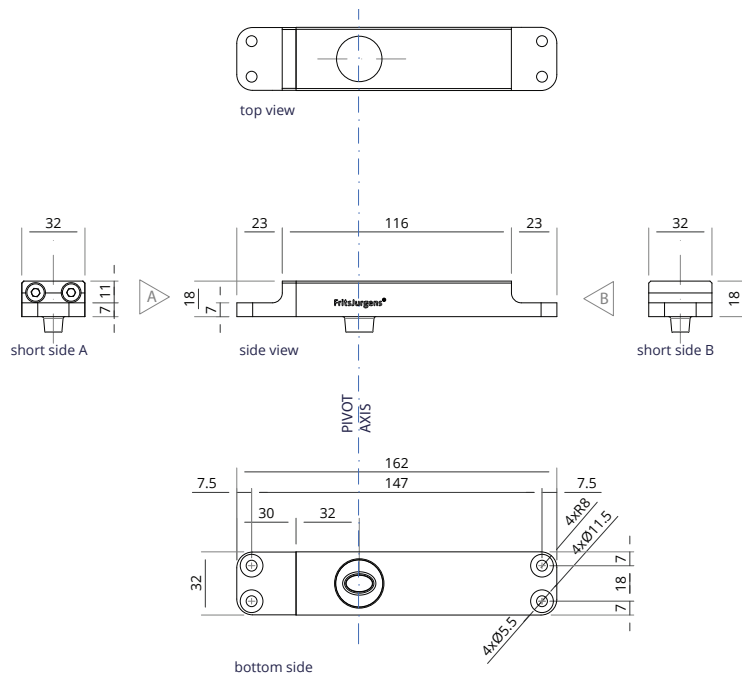
System One 40 mm



COMPONENTS



Top pivot 70 mm - Class G



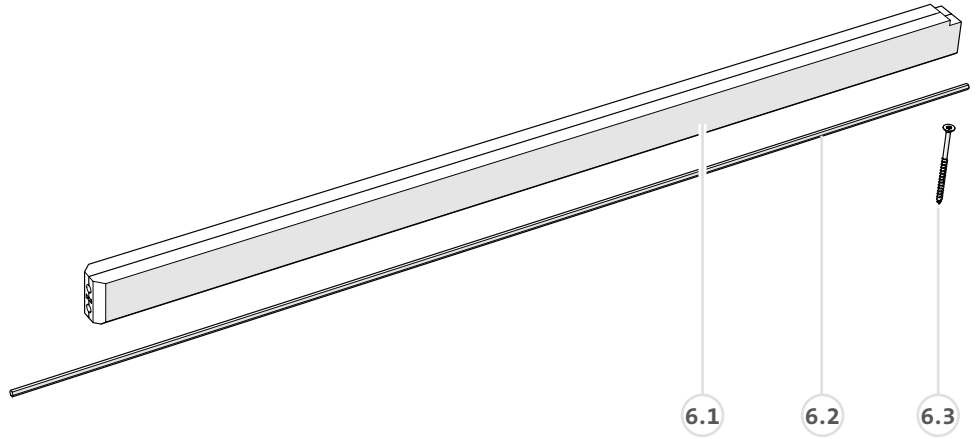
System One 70 mm

# MILLING

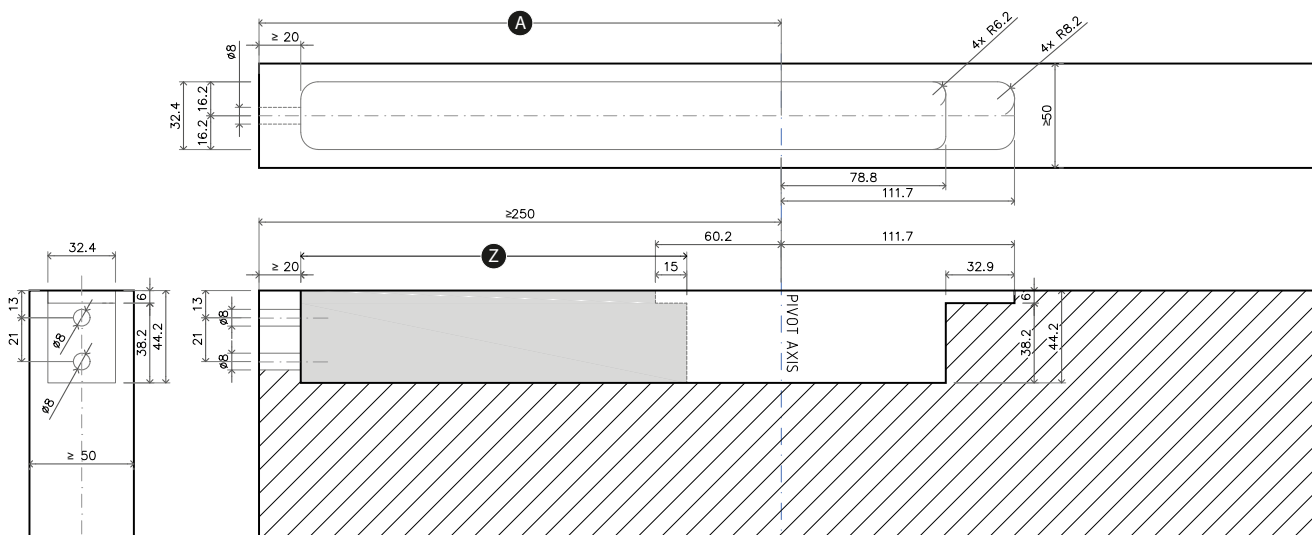
A > 250 MM

## SUPPORTING COMPONENTS

- 6.1 Hexagon Guide 1 m or  
Hexagon Guide 2 m
- 6.2 Hexagon 1.1 m or  
Hexagon 2.1 m
- 6.3 Screw (4x70) (4x) or  
Screw (4x70) (6x)

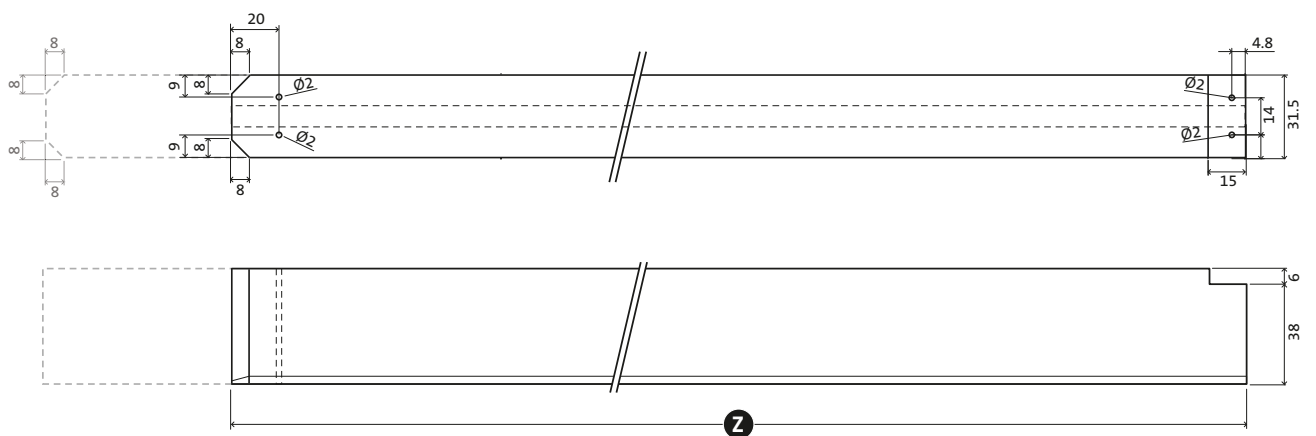


1 Determine Hexagon Guide length Z.



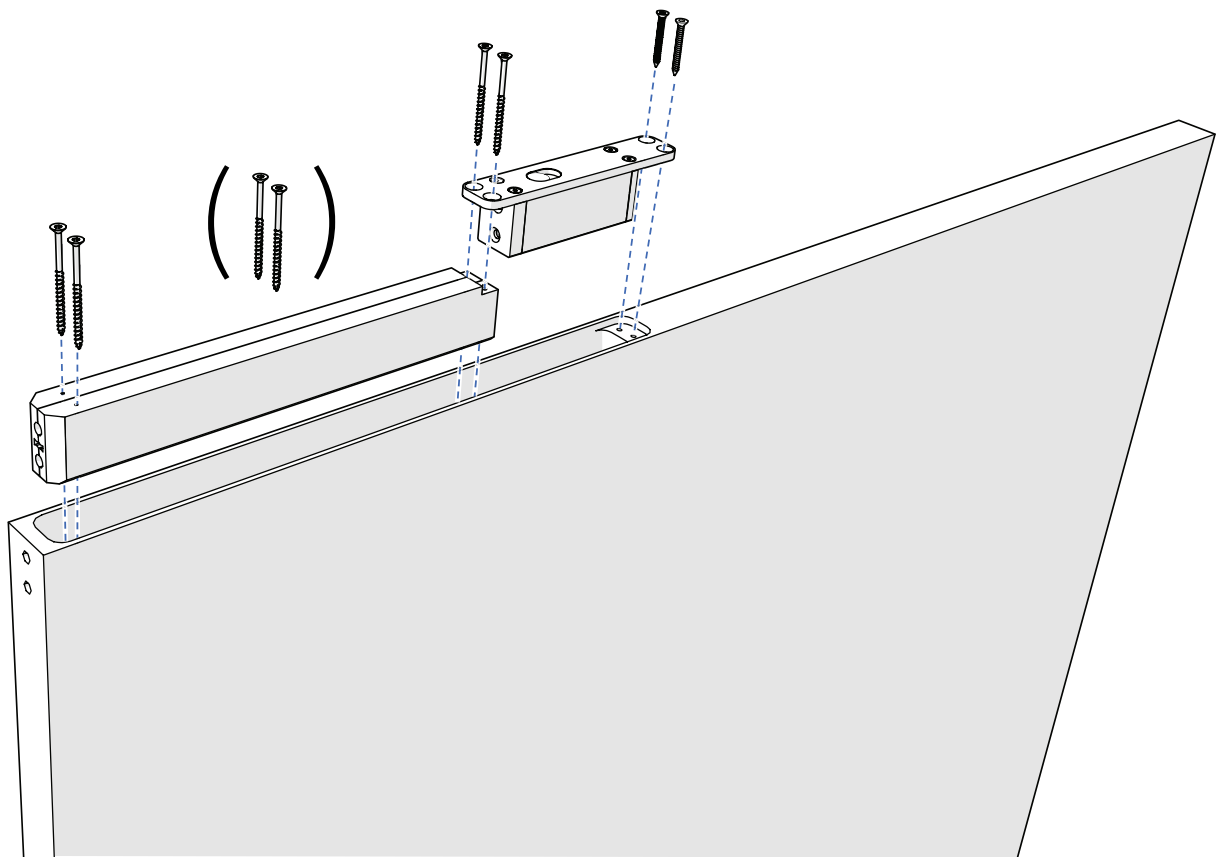
2 Cut the Hexagon Guide to size.

3 Chamfer the sides.



**4** Drill holes for the mounting screws\*. If you use the 1 m Hexagon Guide, two screws are enough. If you use the 2 m Hexagon Guide, use an extra pair.

**5** Mount the Hexagon Guide and the top pivot.



**System One 40 mm** → continue on page **4**

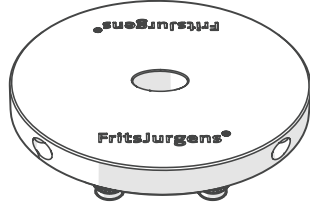
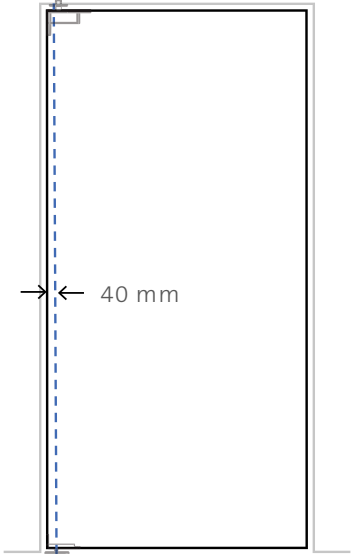
**System One 70 mm** → continue on page **6**

\* Alternatively, use glue (not included) to mount the Hexagon Guide.

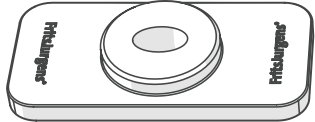


Side placement

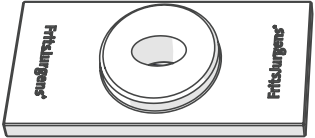
System One 40 mm



→ page 12



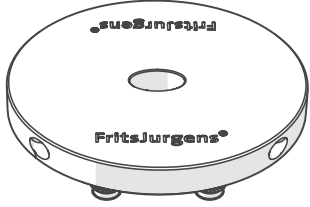
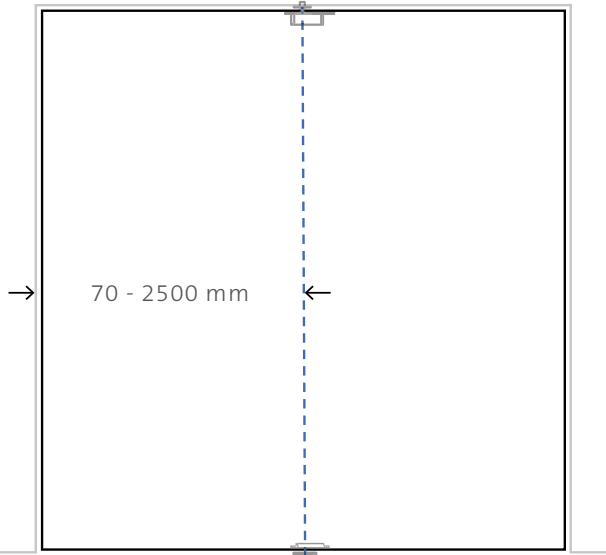
→ page 15



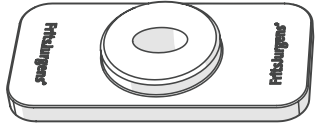
→ page 16

Middle placement

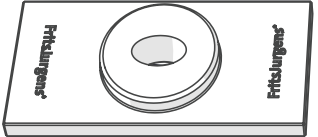
System One 70 mm



→ page 19



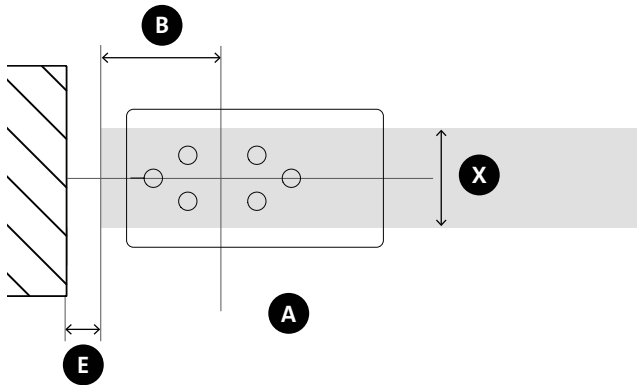
→ page 15



→ page 16

# MOUNTING

**1** Determine the position of pivot point **A** on the floor. Use the fitting template and the table below.



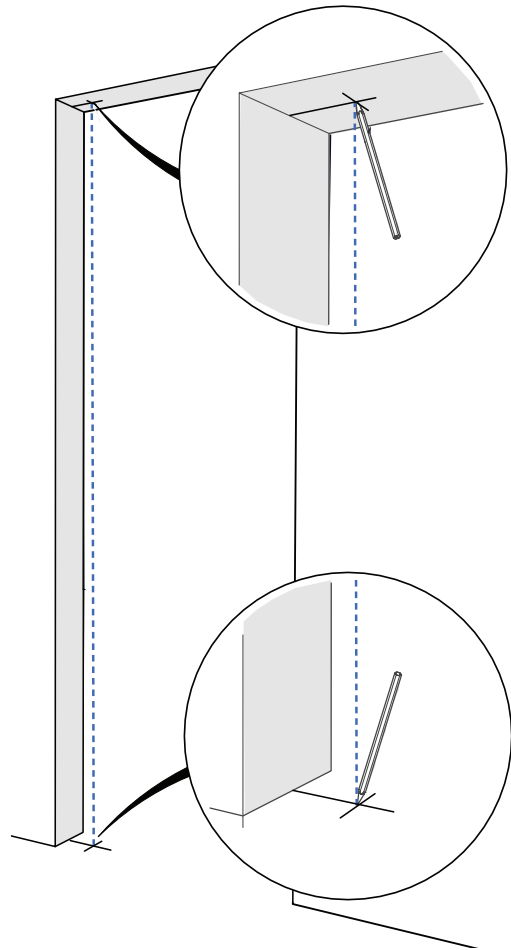
	40	50	60	70	80	90	100	X
B								
40	2	2	2	2	3	3	3	
70	5	6	10	10	13	15	18	
91	4	5	7	9	10	12	15	
250	3	3	4	4	5	6	7	
500	2	3	3	3	4	4	5	
1000	2	2	3	3	3	3	3	
1500	2	2	2	2	2	3	3	
2000	2	2	2	2	2	2	3	E

**E** Minimum gap between door and wall (mm)

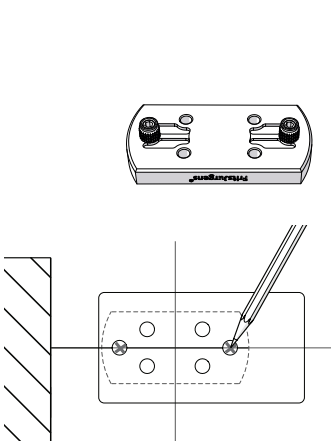
**B** Distance pivot point to door edge (mm)

**X** Door thickness (mm)

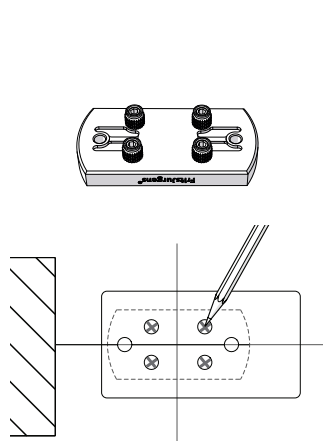
**2** Mark pivot point **A** on the floor and on the ceiling.



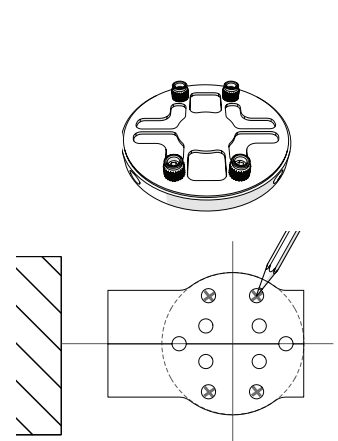
**3** Mark the drilling holes on the floor. Use the fitting template.



*Floor plate squared NA or Squared Black, one floor type*



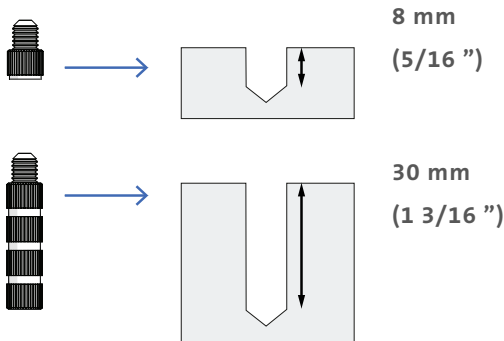
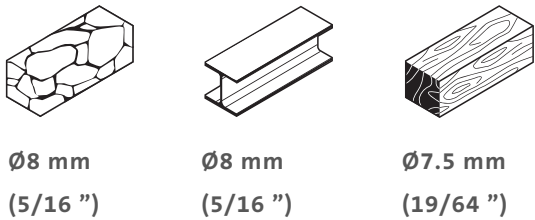
*Floor plate squared NA or Squared Black, one or two floor types*



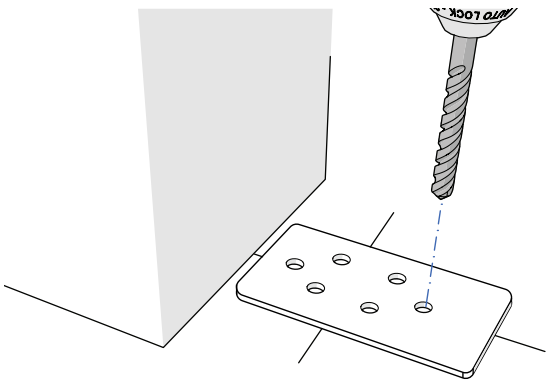
*Floor plate round, one or two floor types*



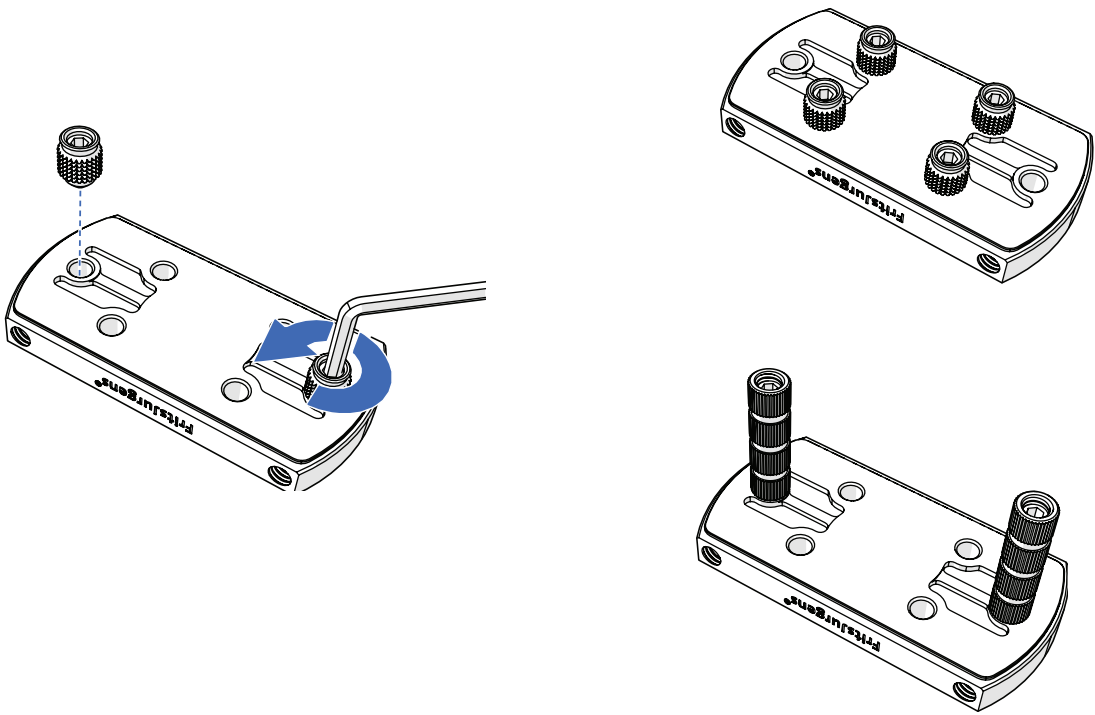
4 Select the correct drill bit for the floor and determine the drilling depth.



5 Drill the holes in the floor on the marked spots.



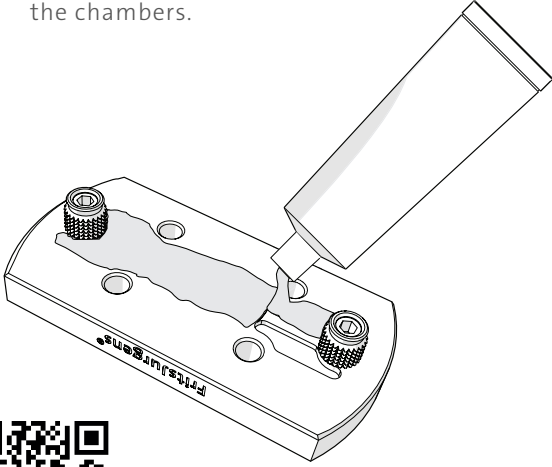
6 Determine the pin configuration for your situation. If necessary, use Allen key 3 to unmount the pre-installed pins and install the correct configuration.



# MOUNTING

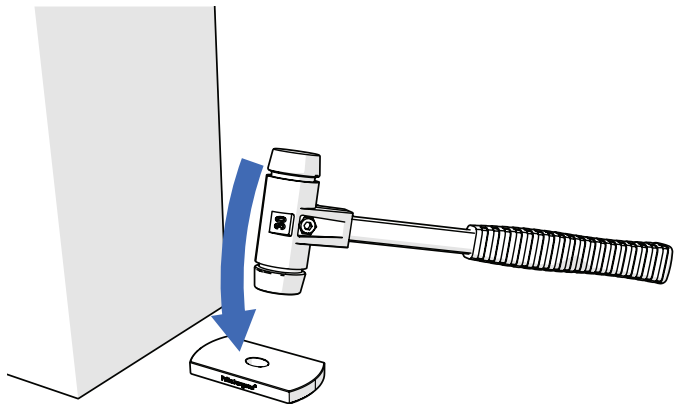
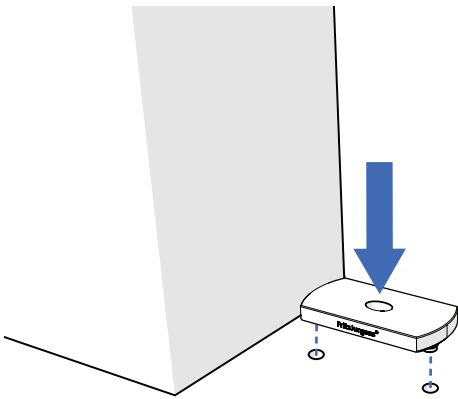
---

- 7 Fill the glue chambers in the floor plate with glue and apply a 1 mm layer of glue in between the chambers.

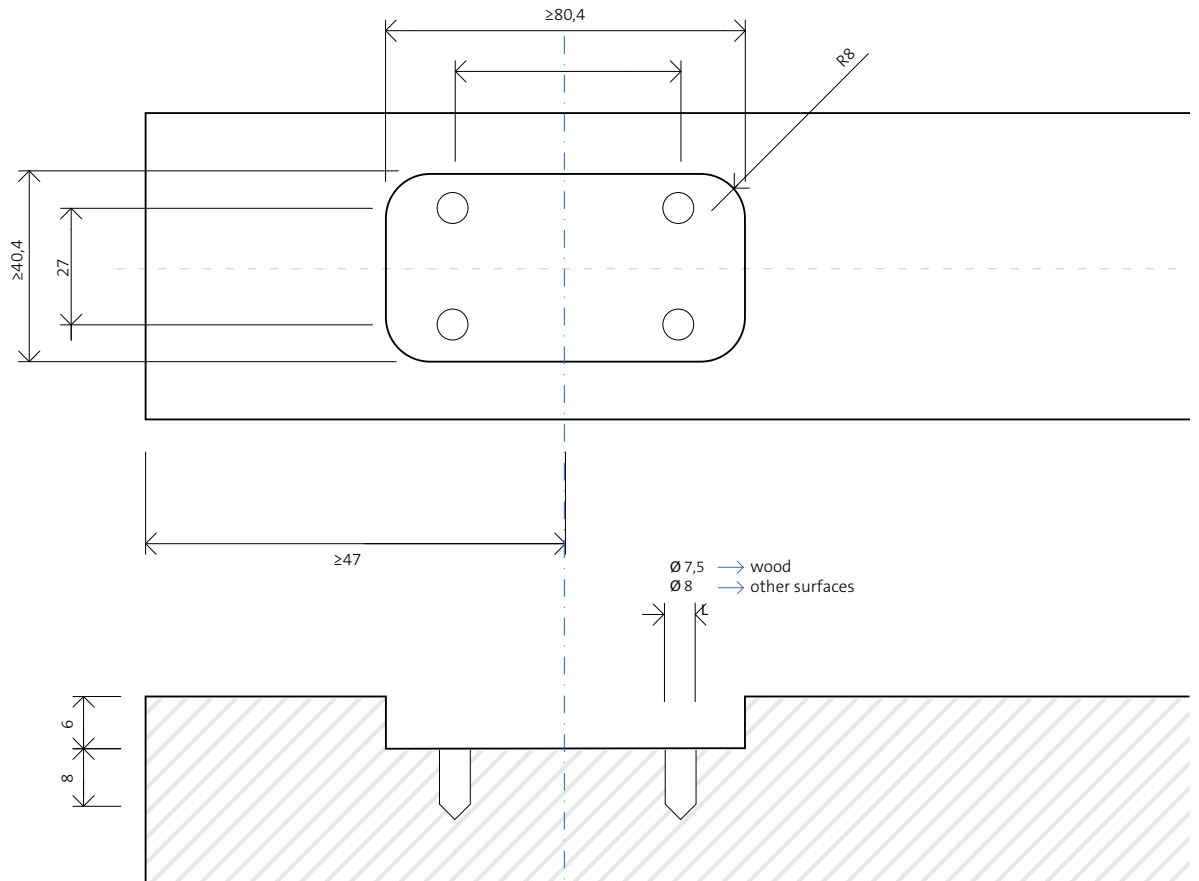


\* Scan the QR code for information about drying time and glue specifications.

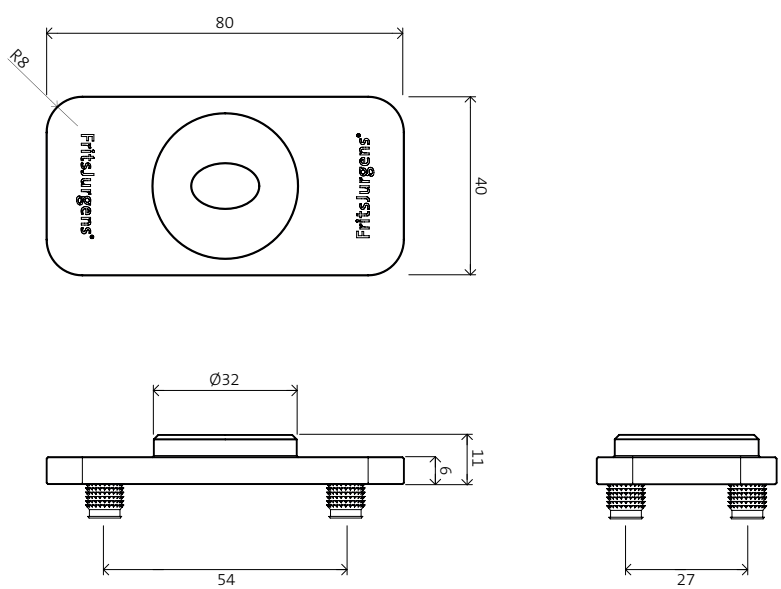
- 9 Use a rubber hammer to affix the floor plate.



FLOOR PLATE FLUSH ROUNDED  
PREPARING THE FLOOR OR SILL



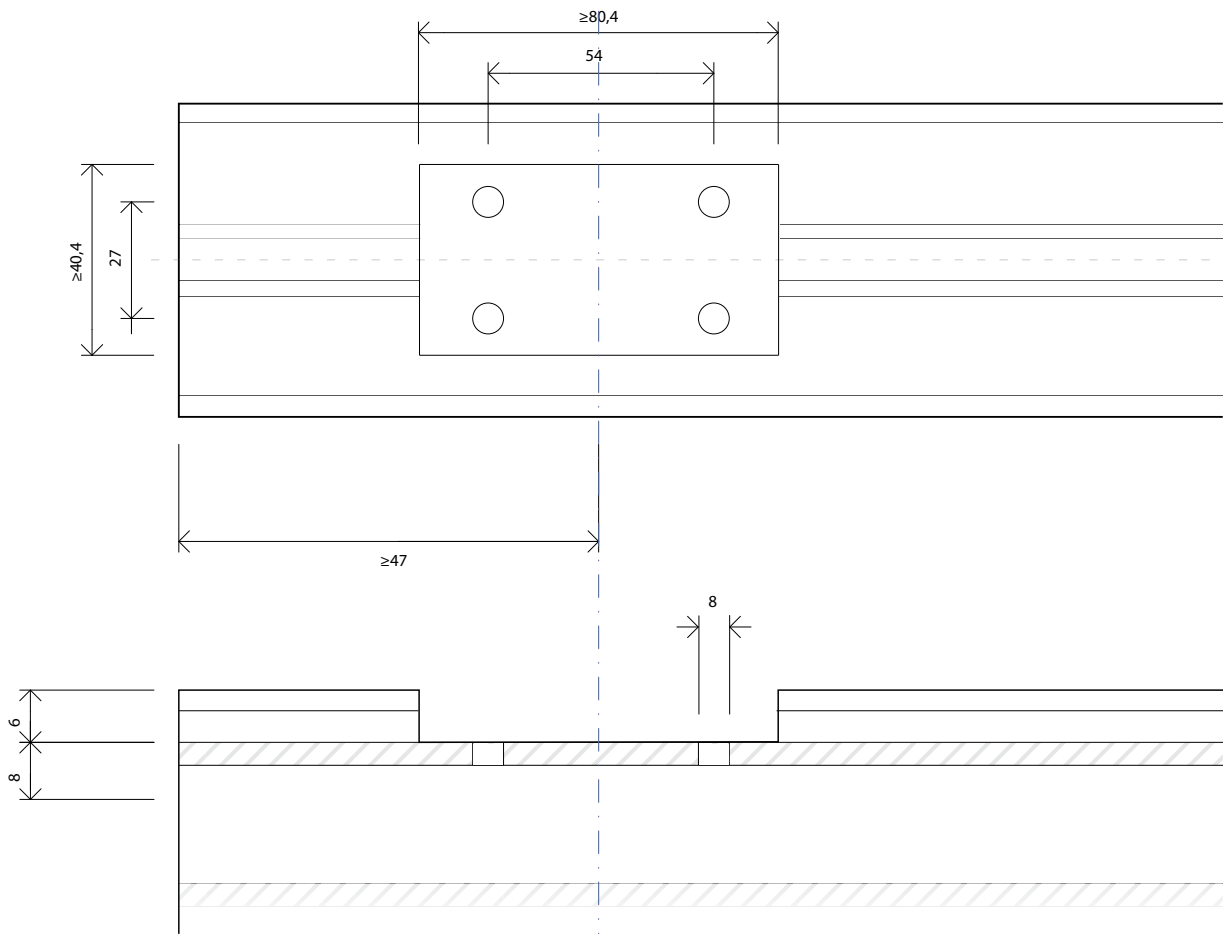
DIMENSIONS



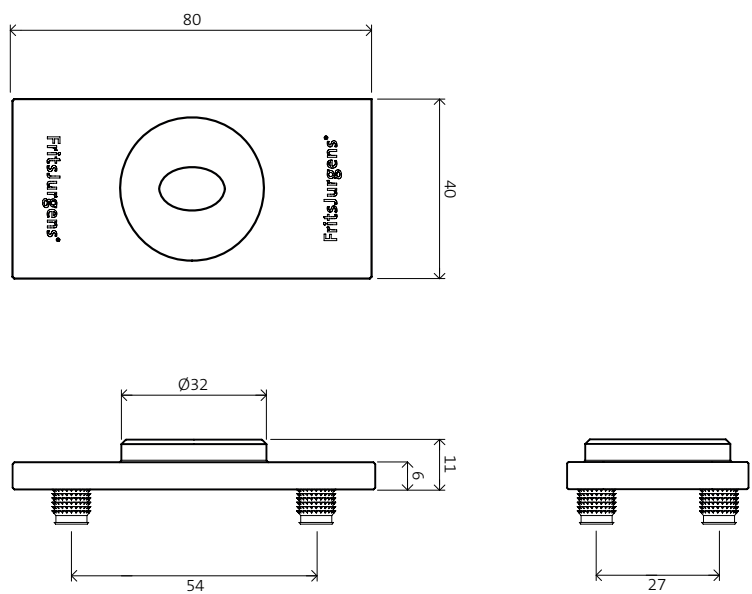
- Side placement: follow steps 7, 8 and 9 on page **14**
- Middle placement: follow steps 7, 8 and 9 on page **20**

# MOUNTING

## FLOOR PLATE FLUSH SQUARED PREPARING THE FLOOR OR SILL



## DIMENSIONS

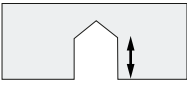


- Side placement: follow steps 7, 8 and 9 on page **14**
- Middle placement: follow steps 7, 8 and 9 on page **20**


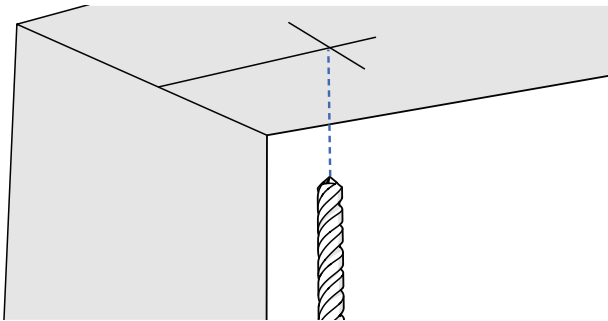
## CEILING PLATE

**1** Drill a hole for the ceiling plate.

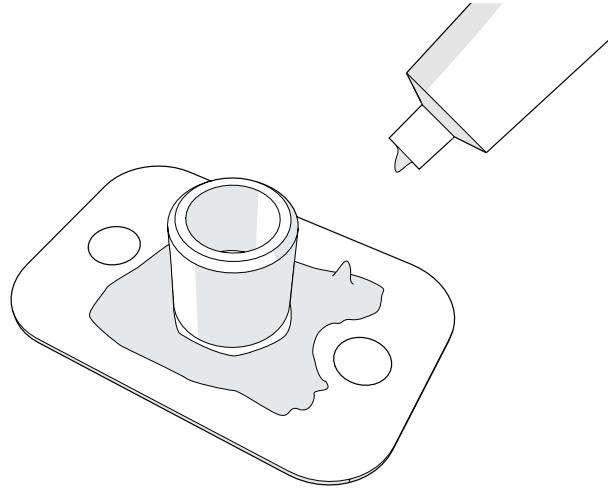
ceiling plate 20 mm  $\varnothing$ 20 mm  
15 mm (25/32 ") (25/32 ")



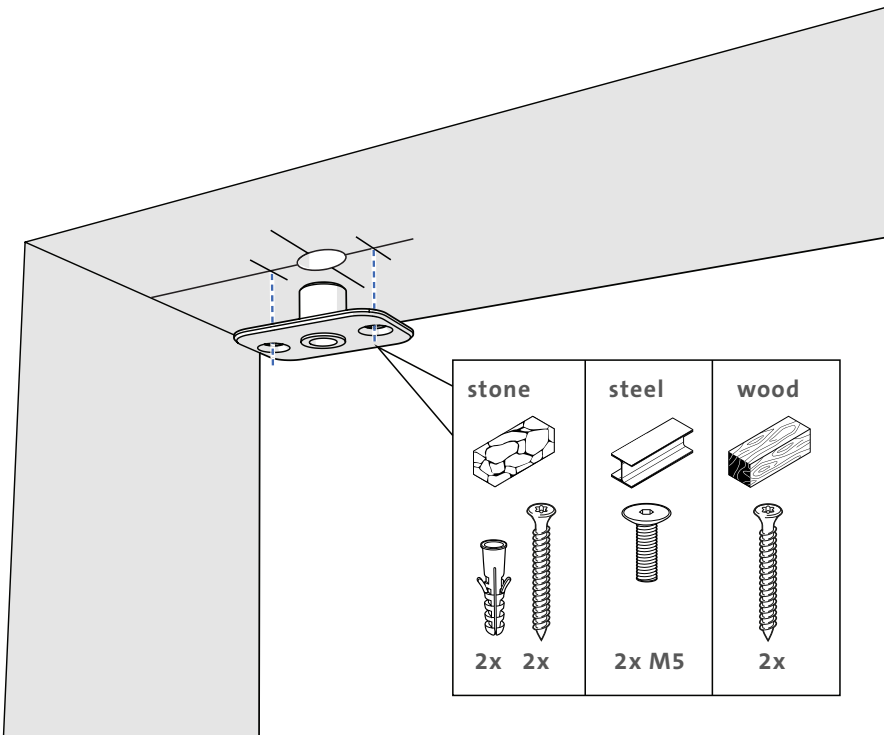
ceiling plate  $\varnothing$ 20 mm  
Cable (25/32 ")  
Grommet

**2** Apply a 1 mm thick layer of glue to the ceiling plate.



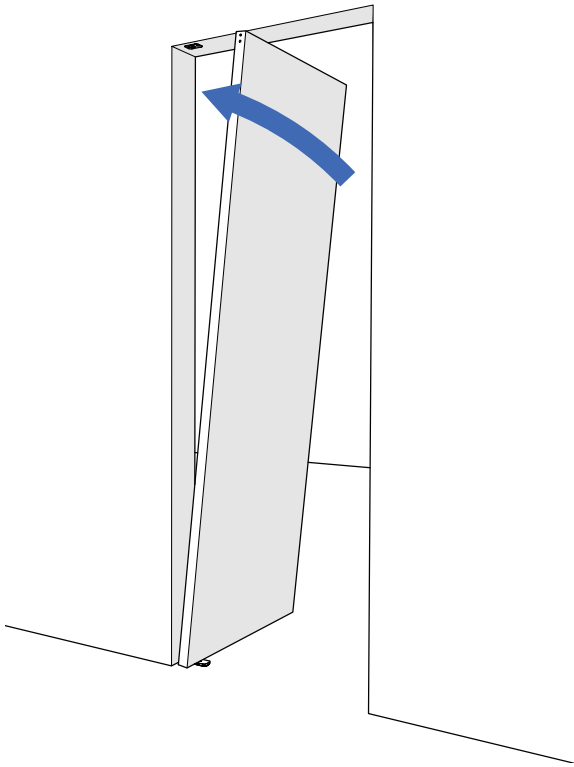
**3** Affix the ceiling plate.



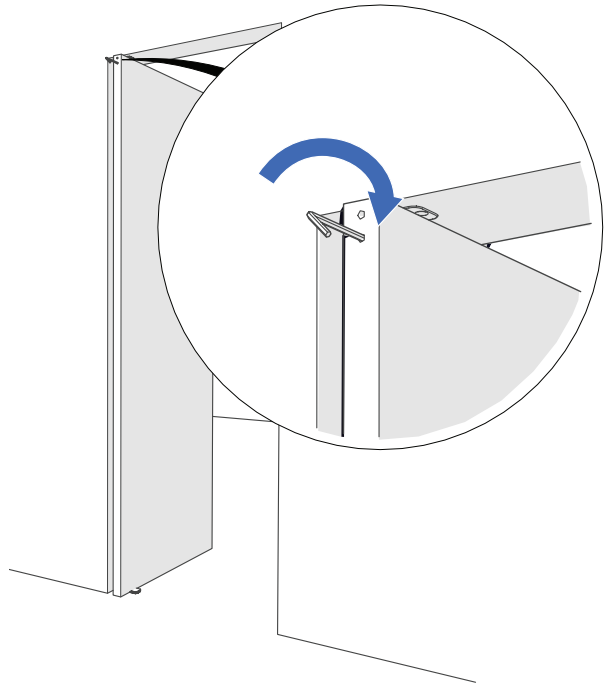
# MOUNTING

## DOOR

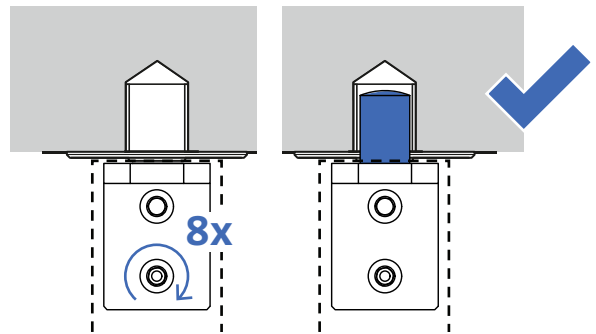
**1** Position the door on the floor plate. Make sure the bottom cam is positioned in the elliptical hole in the floor plate. Align the door with the ceiling plate.



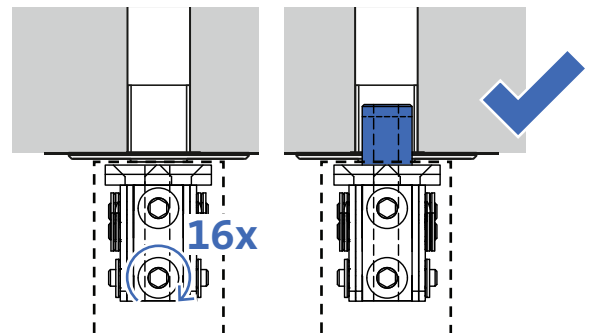
**2** Extend the pivot with Allen key 5 or use the Hexagon Guide (page 8, item 6.2).



Top pivot 70 mm → Turn the key **8** times.



Top pivot Cable Grommet → Turn the key **16** times.

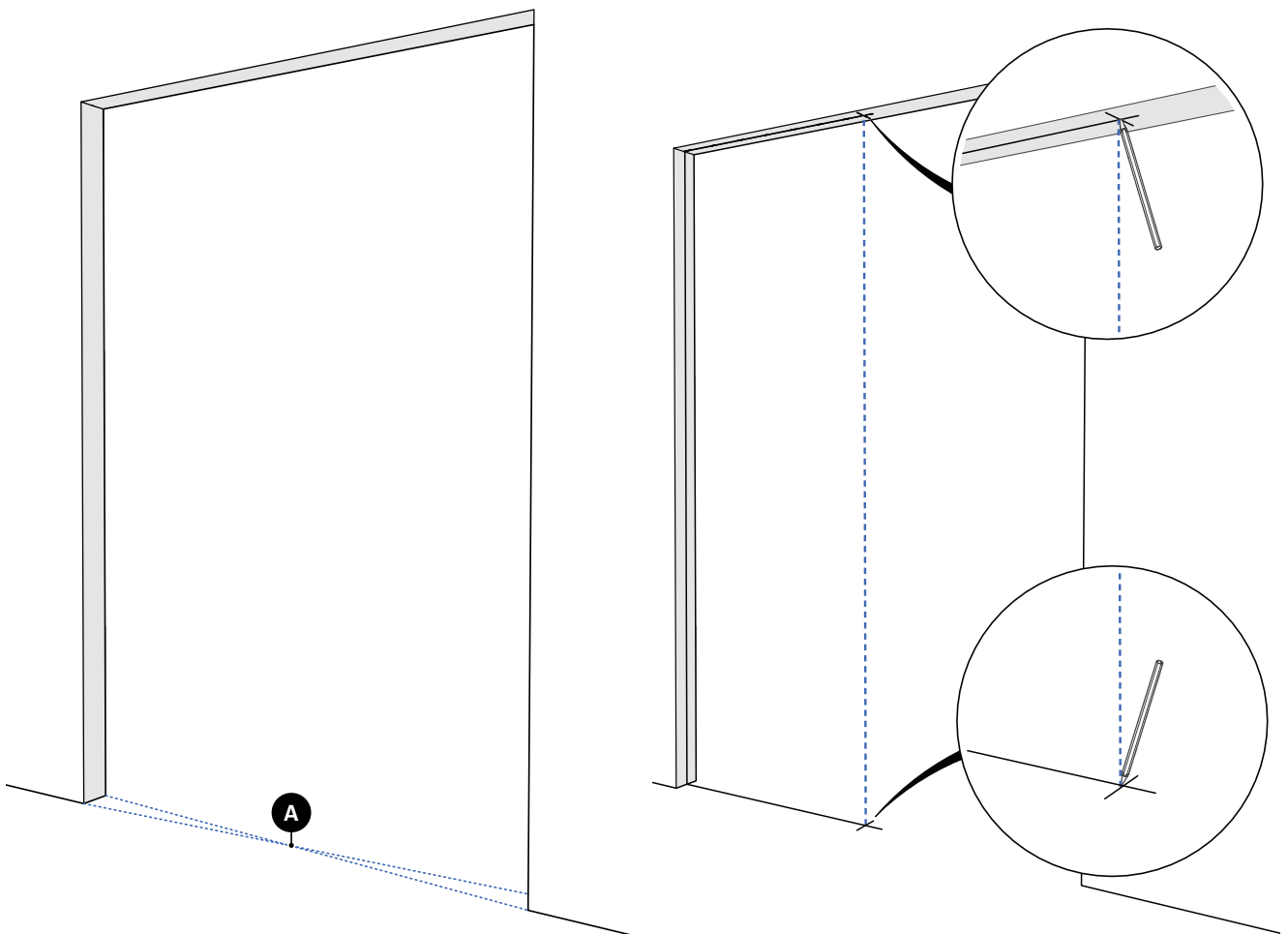


→ continue on page **23**

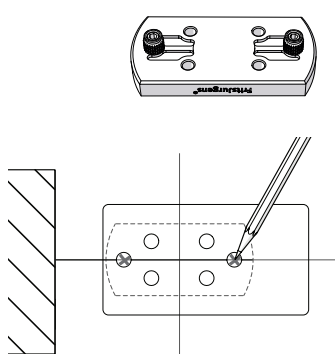
## FLOOR PLATE

**1** Determine the position of pivot point **A** in the middle of the door frame on the floor.

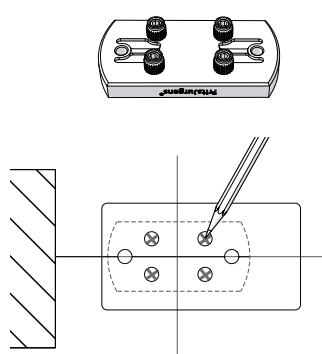
**2** Mark pivot point **A** on the floor and on the ceiling.



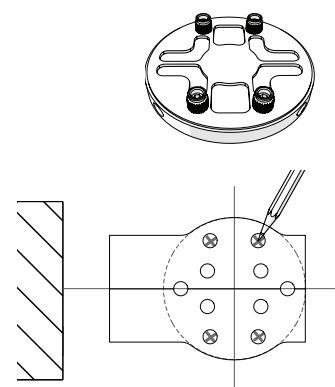
**3** Mark the drilling holes on the floor. Use the fitting template.



*Floor plate squared NA or Squared Black, one floor type*



*Floor plate squared NA or Squared Black, one or two floor types*

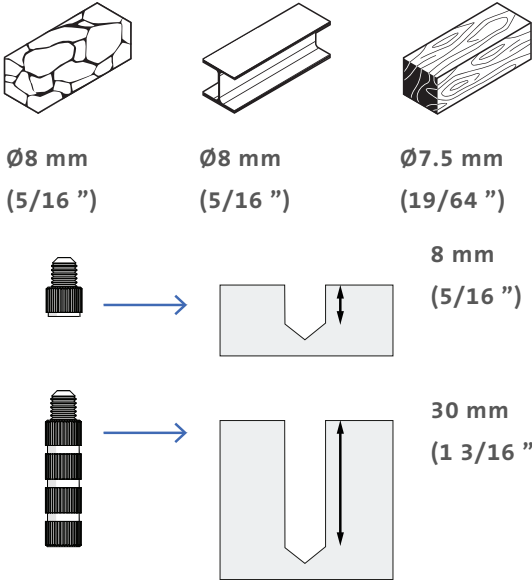


*Floor plate round, one or two floor types*

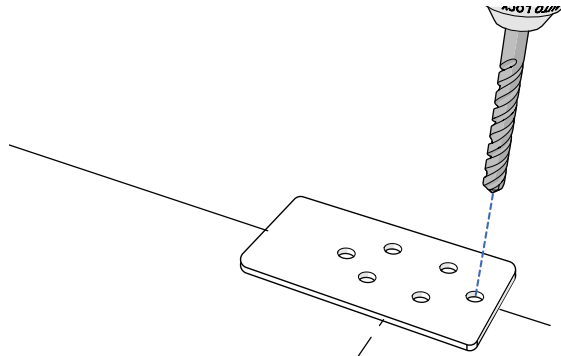
# MOUNTING

---

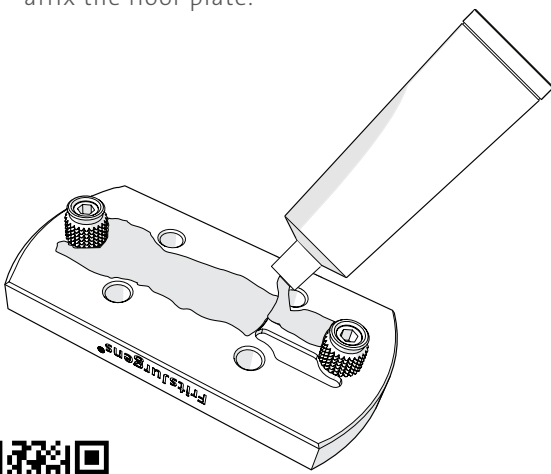
- 4 Select the correct drill bit for the floor and determine the drilling depth.



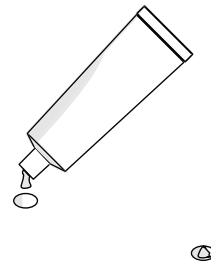
- 5 Drill the holes in the floor on the marked spots.



- 6 Apply a 1 mm thick layer of glue to the floor plate. Make sure the glue does not overflow when you affix the floor plate.

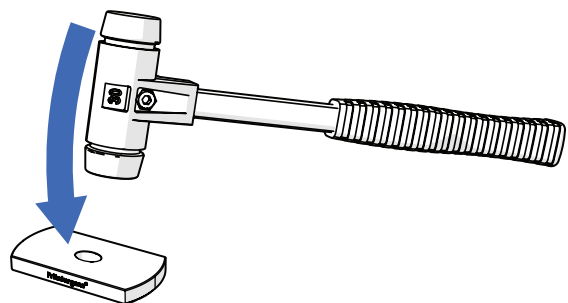
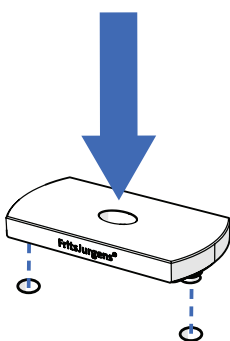


- 7 Add glue in the holes in the floor. Make sure the holes don't overflow when you place the floor plate.



\* Scan the QR code for information about drying time and glue specifications.

- 8 Use a rubber mallet to affix the floor plate.





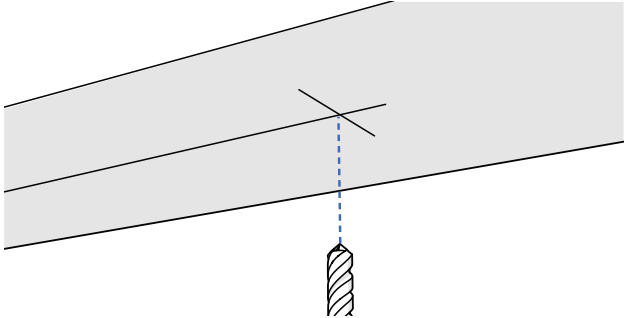
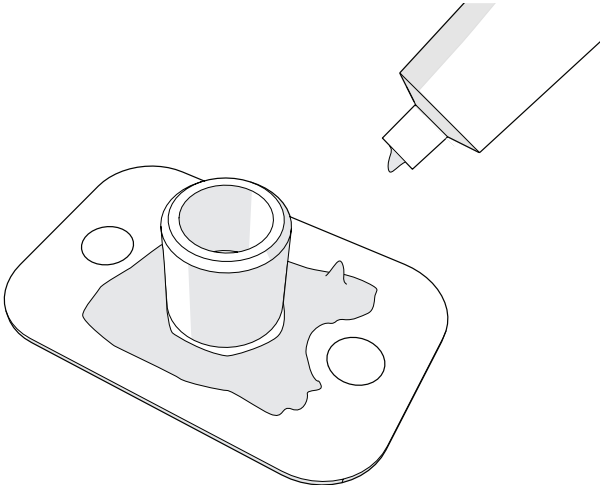
CEILING PLATE

1 Drill a hole for the ceiling plate.

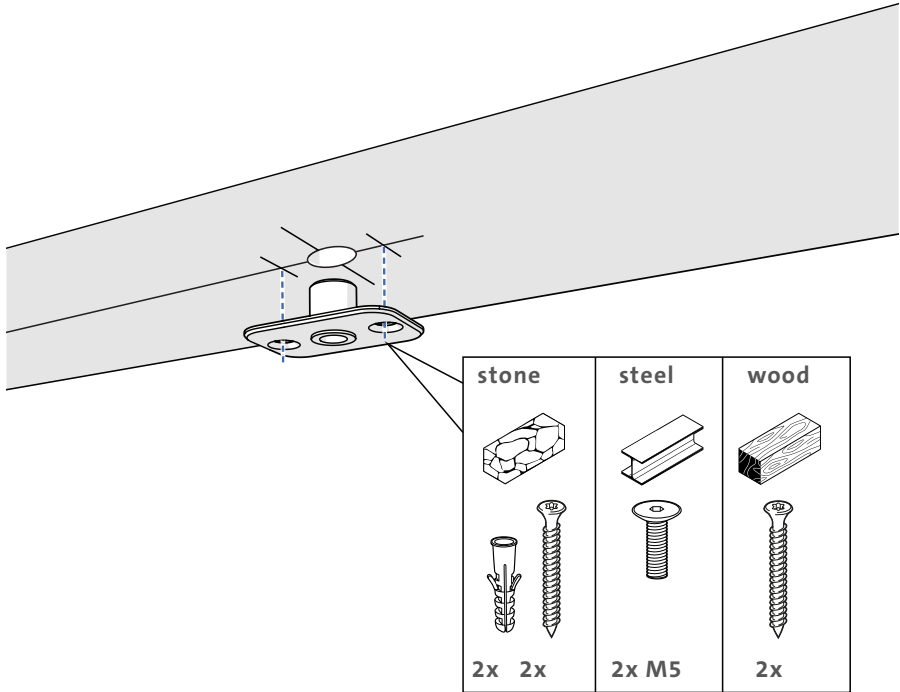
ceiling plate 20 mm Ø20 mm  
15 mm (25/32 ") (25/32 ")

ceiling plate Ø20 mm  
Cable (25/32 ")  
Grommet

2 Apply a 1 mm thick layer of glue to the ceiling plate.



3 Affix the ceiling plate.

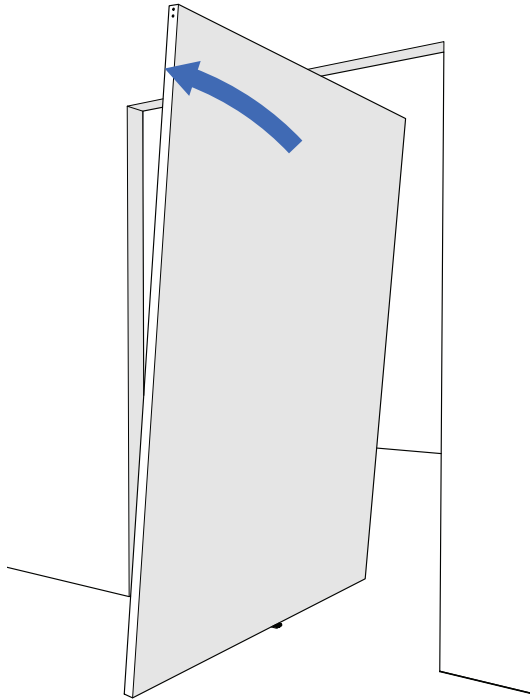


# MOUNTING

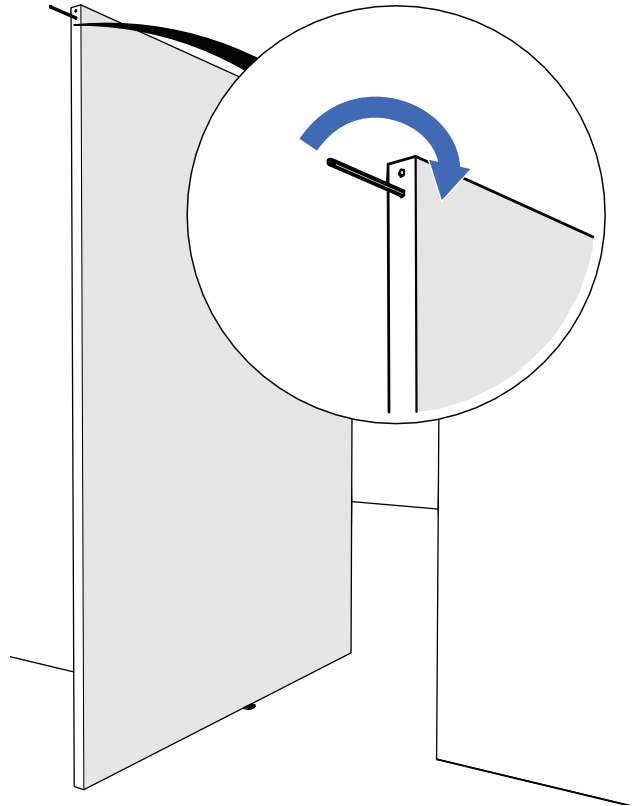
---

## DOOR

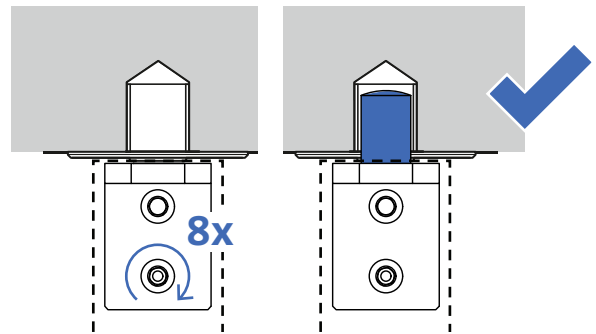
**1** Position the door on the floor plate. Make sure the bottom cam is positioned in the elliptical hole in the floor plate. Align the door with the ceiling plate.



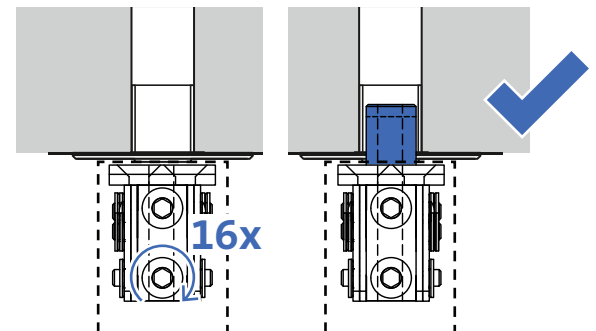
**2** Extend the pivot with the Hexagon Guide (page 8, item 6.2).



Top pivot 70 mm → Turn the key **8** times.



Top pivot Cable Grommet → Turn the key **16** times.

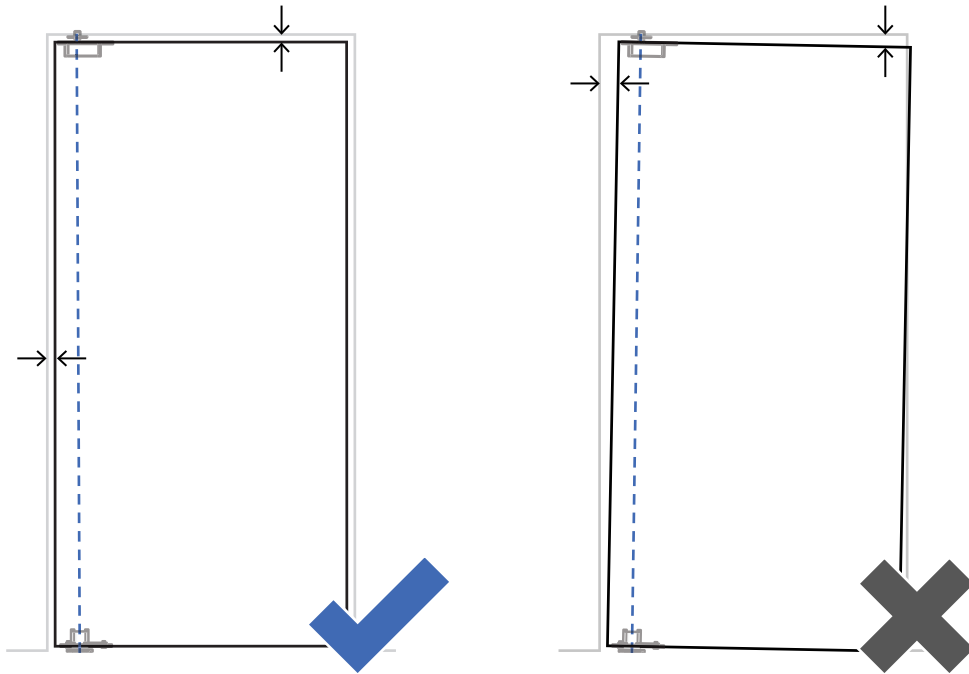


# SIDE PLACEMENT AND MIDDLE PLACEMENT

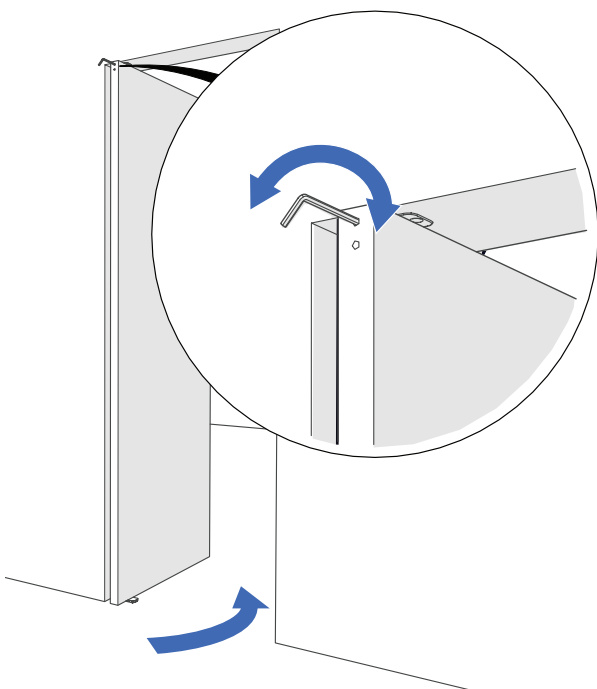
---

## FINE-TUNING THE CLOSING SEAM

- 1 Check if the door is aligned parallel to the ceiling and the wall.



- 2 Open the door. Use Allen key 5 or the hexagon (page 12, item 6.2) until the door is aligned parallel to the ceiling and the wall.



# FritsJurgens®

## FRITSJURGENS INTERNATIONAL

A. Einsteinlaan 1  
9615 TE Kolham  
The Netherlands  
+31 598 343 410  
info@fritsjurgens.com

## FRITSJURGENS ITALIA (COMMERCIAL OFFICE)

Via Marsilio Ficino 22  
50132 Firenze  
Italy  
+39 055 064 0290  
info@fritsjurgens.com

## FRITSJURGENS CONSULTING FZE (REGIONAL SALES OFFICE)

Premises No. HD67  
Floor 25  
Sheikh Rashid Tower  
Dubai World Trade Centre  
Dubai UAE

FJ.IN.TP-R.EN.2022

Copyright © FritsJurgens®

13-02-2023



8 720681 618821 >